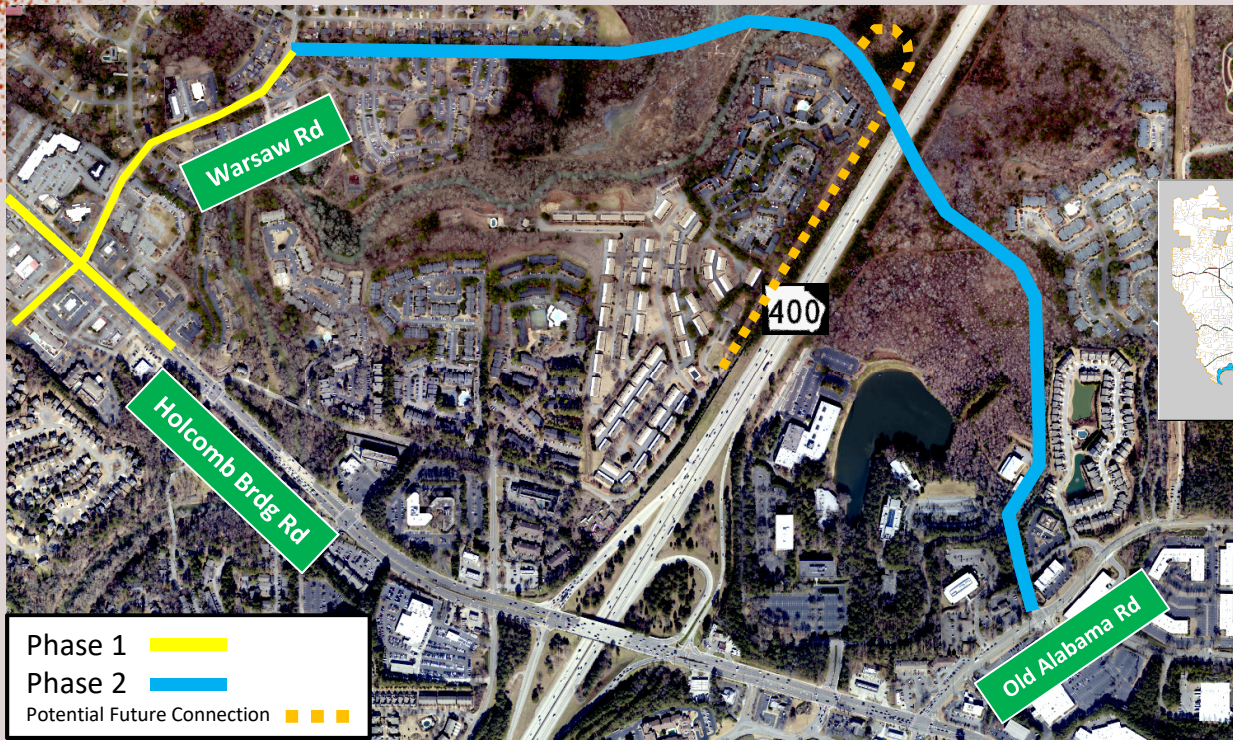


# Big Creek Parkway – Phase 1 and 2



Project Manager | Greg Nicolas, P.E. | Engineering Design Manager



## PROJECT OVERVIEW

The Big Creek Parkway project will build a new two-lane roadway across GA-400 from Warsaw Road to Old Alabama Road. It will include a new bridge over GA-400 and a new bridge over Big Creek (waterway).

The goal of the Big Creek Parkway project is to provide an alternative to the congested Holcomb Bridge interchange for travelers going between east and west Roswell. The new road will also include a sidewalk and bicycle path to make walking and biking convenient in the area. In December of 2023, the Mayor and City Council elected to revert the project alignment back to the original 2016 alignment that was approved by the voters that provided a direct connection to Warsaw Road. Also, in 2023 an IGA was formalized with GDOT to construct the bridge over GA-400 as part of GDOT's Express Lane project.

## Project Cost: \$84 million (estimated)

The content, design, and locations of projects indicated on these fact sheets are dependent upon Mayor and Council approval and are subject to change. This information cannot be reproduced without written consent from the City of Roswell. The user agrees to hold the City of Roswell harmless, including any loss of profits or consequential damages. For additional information, contact the Roswell Department of Transportation at 770-594-6420 or [transcustomerserviceteam@roswellgov.com](mailto:transcustomerserviceteam@roswellgov.com)

### Phase 1 – Current Status



### Phase 2 – Current Status

