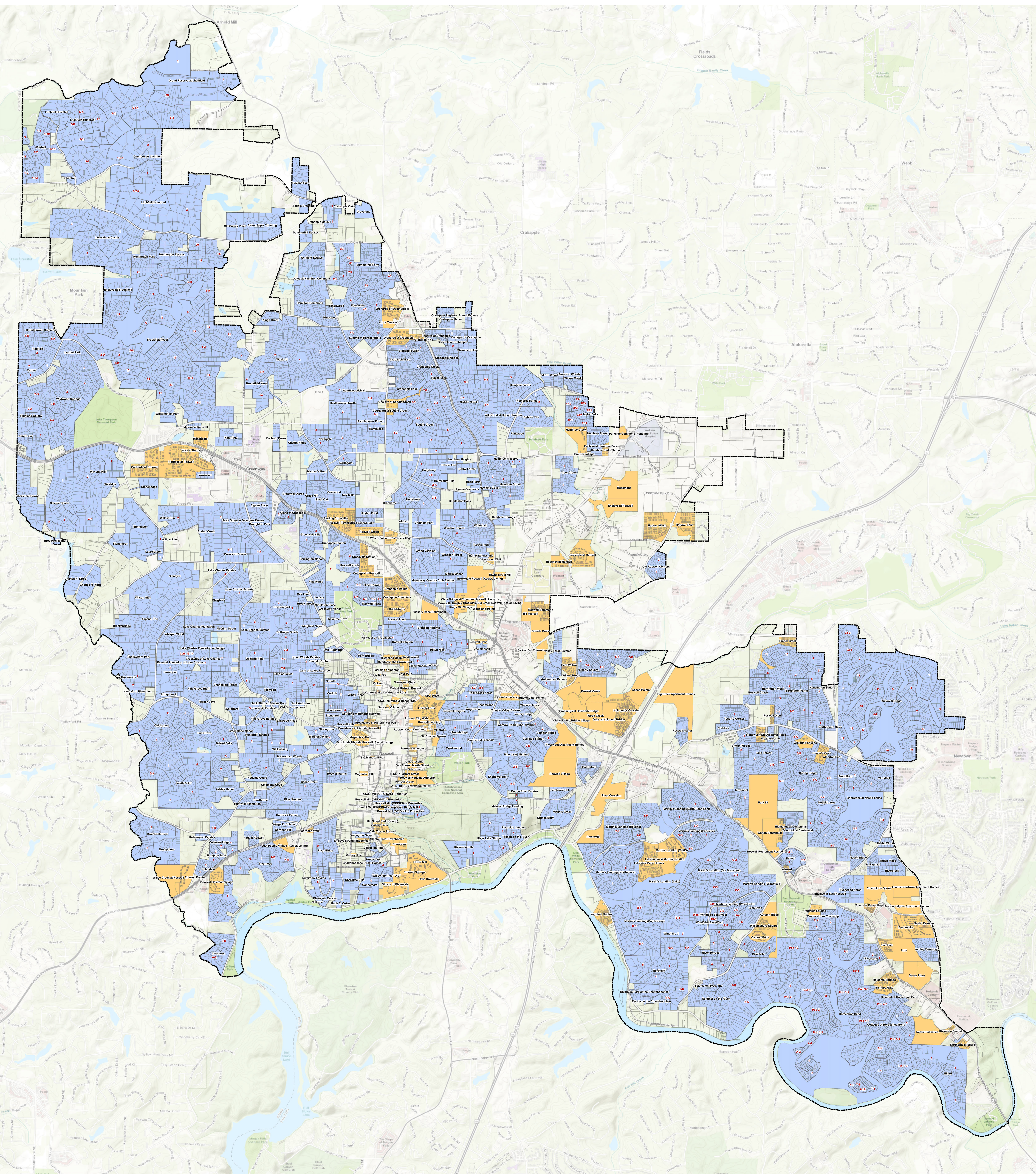


Subdivisions and Multi-Family Units



Legend

- City Limit
- Tax Parcel
- Subdivision Phases
- Multi-Family Complex
- Subdivision



1 inch equals 1,200 feet
1:14,400
0 1,200 2,400 Feet

Created By: Angel Clark Created Date: 8/20/19 Updated Date: 4/10/2019 8:14:26 AM
Document Path: C:\2017 Website_Updates\GIS\Subdivisions.mxd

Sources: City of Roswell GIS (2017); Esri (2017)
The City of Roswell attempts to create, use, and maintain accurate spatial data. However, the City of Roswell does not warrant the accuracy or currency of the data contained herein. All data is provided "as is," with all faults, without warranty of any kind, either expressed or implied, including, but not limited to, the implied warranties of merchantability.

Please Visit Roswell's Interactive GIS Map: www.roswellga.com/map

