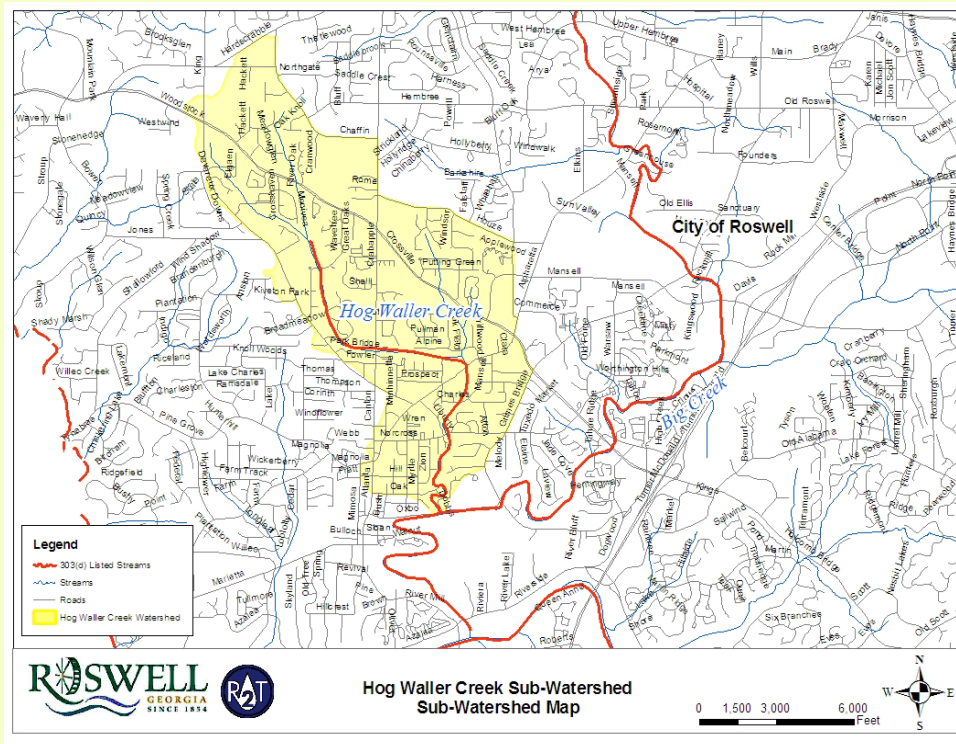


Roswell Stream Highlight - Hog Weller Creek



Hog Weller Creek

Hog Weller Creek is a tributary to Big Creek in the Chattahoochee River Basin, located in the City of Roswell. Hog Weller Creek currently has elevated levels of bacteria specifically *fecal coliform* which are likely caused by the influence of urban runoff. Urban runoff can also cause stream bank failure as seen in the photo below. As residents of the City of Roswell, we can help to improve stream conditions and keep Hog Weller Creek clean.



During storm events, the stormwater flows from roof tops, lawns, roadways and collects pollutants and debris. The storm water then drains to the nearest creeks, rivers and lakes without any treatment or removal of the pollutants. The pollutants in Hog Weller Creek can be harmful to the ecosystem, and impact the fish and other aquatic life.

This is a picture of bank erosion along Hog Weller Creek. There are many small changes we can do to improve the water quality in Hog Weller Creek.

Top Ten tips we can do to improve Hog Waller Creek:

1. Check and maintain your septic system regularly. Failing septic systems can cause untreated sewage to leak into the groundwater which provides the base flow of Hog Waller Creek. Visit USEPA's website for additional guidance on septic system maintenance and care. <http://cfpub.epa.gov/owm/septic/index.cfm>
2. Install rain barrels and rain gardens at home to decrease stormwater.
3. Leave a natural vegetative buffer along stream banks to prevent erosion and protect the stream. Consult the Georgia Soil and Water Conservation Guidance for Streambank Restoration for replanting bare areas near the stream.
4. Dispose household grease (meat fats, cooking oil, butter and margarine, etc.), into the trash can. Avoid putting these products down the drain. These materials can clog pipes and could cause raw sewage to overflow from sewer manholes near Hog Waller Creek.
5. Don't dispose of household hazardous wastes in sinks and toilets, such as motor oil, paint, batteries, etc.
6. Pick up your pet waste and dispose of it in the trash can. Pet waste contributes to elevated levels of bacteria in the stream from stormwater.
7. Avoid the use of fertilizer and pesticide. If you have to use them, read the label to ensure proper usage and application rates.
8. Never dump anything into a storm drain or drainage ditch.
9. Check your vehicles regularly for leaks and repair them.
10. If you have to wash car at home, do so on the lawn, not on pavement.

We can do more to help Hog Waller Creek by reporting pollution to the WRD, Nick Pezzello at swmp@roswellgov.com or (770) 641-3707, such as illegal dumping, clogged and failed catch basins and outlets, potential contaminants, illicit discharges and connections, and sewer overflows, etc. For more information on preventing water pollution visit the Clean Water Campaign website. <http://www.cleanwatercampaign.com/>