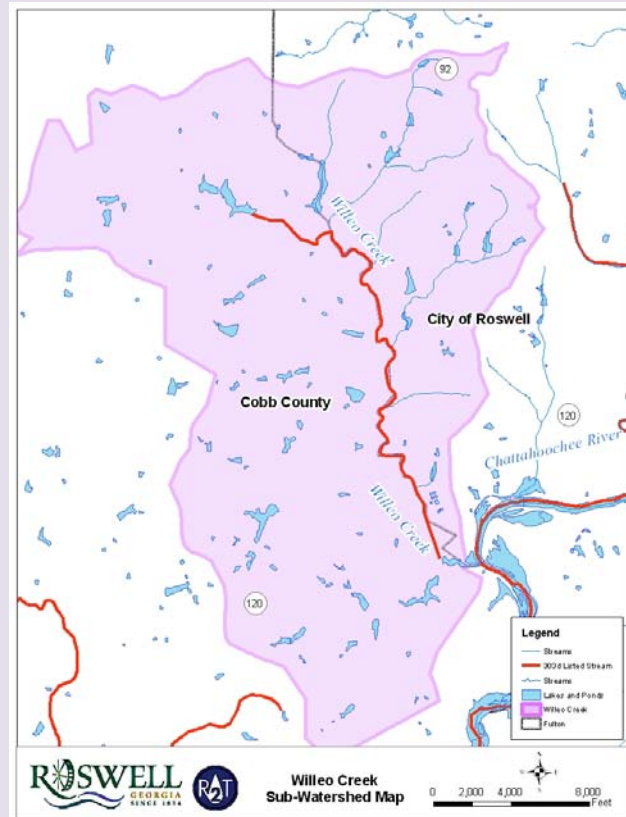


Roswell Stream Highlight - Willeo Creek



Willeo Creek

Willeo Creek is a tributary to the Chattahoochee River, located in the City of Roswell. Willeo Creek currently has elevated levels of bacteria specifically *fecal coliform* which are likely caused by the influence of urban runoff. Urban runoff can also cause stream bank failure as seen in the photo below. As residents of the City of Roswell, we can help to improve stream conditions and keep Willeo Creek clean.

During storm events, the stormwater flows from roof tops, lawns, roadways and collects pollutants and debris. The storm water then drains to the nearest creeks, rivers and lakes without any treatment or removal of the pollutants. The pollutants in Willeo Creek can be harmful to the ecosystem, and impact the fish and other aquatic life.



This is a picture of bank erosion along Willeo Creek. There are many small changes we can do to improve the water quality in Willeo Creek.

Top Ten tips we can do to improve Willeo Creek:

1. Keep pollution off our creeks! Take hazardous items to the proper recycling or disposal facility near your area.
2. Check and maintain your septic system regularly. Failing septic systems can cause untreated sewage to leak into the groundwater which provides the base flow of Willeo Creek. For additional guidance on septic system maintenance, visit USEPA website. <http://cfpub.epa.gov/owm/septic/index.cfm>
3. Encourage the use of soil bioengineering techniques for bank stabilization and erosion control such as brush layering, cuttings, staking, and fascines.
4. Dispose household grease (meat fats, cooking oil, butter and margarine, etc.), into the trash can. Avoid putting these products down the drain. These materials can clog pipes and could cause raw sewage to overflow from sewer manholes near Willeo Creek.
5. Use water-based paint removers and paints if possible. Clean water based paint brushes in the sink, not in the creek or gutter.
6. Dispose of water used to clean carpets, upholstery or floors down sinks or toilets. Professional carpet and upholstery cleaners should put wastewater into the sanitary sewer or haul it away for proper disposal.
7. Pick up any pet litter and properly dispose off in trash cans. Do not let pet litter get washed down the stream!
8. Avoid the use of fertilizer and pesticide. If you have to use them, read the label to ensure proper usage and application rates.
9. Never dump anything into a storm drain or drainage ditch.
10. Check your vehicles regularly for leaks and repair them.
11. Stay on the trail! Mountain bikers and hikers should avoid using short cuts and illegal trails. Such "trails" are not properly designated or maintained and can further add up to the problem of sediment erosion.

We can do more to help Willeo Creek by reporting pollution to the WRD, Nick Pezzello at swmp@roswellgov.com or (770) 641-3707, such as illegal dumping, clogged and failed catch basins and outlets, potential contaminants, illicit discharges and connections, and sewer overflows, etc. For more information on preventing water pollution visit the Clean Water Campaign website. <http://www.cleanwatercampaign.com/>