
EXECUTIVE SUMMARY

The Transportation Master Plan (TMP) for the City of Roswell serves as a comprehensive and periodically updated guide for the city's transportation future. First established in 2006 and currently in its sixth update and first major update in over a decade, **the plan prioritizes the vision of making Roswell the Number One Family Community in America.** It focuses on challenges such as traffic congestion, cut-through traffic, and safety, all aiming to provide a balanced and proactive approach.

The plan began with data gathering and an overall assessment of existing conditions and inventory, using data from various sources, including the 2040 Comprehensive Plan and the 2020 Census. It establishes a baseline understanding of the current transportation system to identify issues like traffic congestion, crash data, and gaps in our bicycle and pedestrian network.

With that information staff conducted public outreach in 2022, staff held public meetings to obtain input from our residents and stakeholders on what goals and improvements the City should pursue over time. This included presenting maps and exercises to best extract the opinions staff needed to hear to best guide our plan.

Moving forward in 2022-2023, staff looked at the needs assessment and analyzed transportation projects to support mobility and accessibility through 2050, linking with the Comprehensive Plan and the Capital Improvement Program (CIP). The assessment considers future transportation demand, congestion levels, economic activity, and accessibility for people with mobility limitations. The assessment also looked at more detailed analysis on cut-through traffic that impacts our roadways and residents. The City was able to purchase anonymous cell phone tracking data to help identify key routes external (non-residents) commuters used in Roswell each workday. This helped determine what cut-through traffic was actually present using a data driven process. These tools help better guide future investment to improve safety and reduce speeds on our roads. Also, the City investigated system maintenance by hiring a new contractor to perform a citywide inspection of approximately 350 centerline miles of city maintained roads, aiming to prevent further deterioration and optimize road conditions. This reporting will also help guide new investment to help raise the quality of our pavement citywide.

The TMP also looked at a detailed financial overview that outlines funding sources, including federal, state, and local funding. The Infrastructure Investment and Jobs Act (IIJA) provided substantial federal funds for various infrastructure needs. State funding changes are also explained, and local funding is detailed through the annual Capital Improvement Program. It also provides a recap our city's recent successes with a City Bond issuance and TSPLOST (Transportation Special Purpose Local Option Sales Tax) referendums.

The TMP's recommended project list was compiled from reviewing the previously adopted Bicycle and Pedestrian Master Plan, the North Fulton Comprehensive Transportation Plan, previous Transportation Master Plan updates. New input from public meetings as well as citizen

stakeholders including the Transportation Advisory Committee (TAC) in 2022-2023 was also used in guiding the plan's findings.

The projects in the plan are broken out in the following categories:

- Annual Programs (Repaving, Sidewalks, Speed Management, etc.)
- Bicycle/Pedestrian
- Bridges
- Corridor Improvements
- Intersection Improvements
- Roadway Projects / Realignment
- Traffic Calming Enhancements

The plan also emphasizes the importance of addressing funding challenges in transportation infrastructure, highlighting changes in gasoline taxes and the impact of the COVID-19 pandemic on commuting patterns. Recommendations include a scoring methodology for project prioritization based on safety factors, traffic/congestion data, and specific considerations for bicycle, pedestrian, bridge, intersection, corridor improvements, and traffic calming projects.

Overall, the plan seeks to provide a well thought out, financially feasible vision for Roswell's transportation future, aligning with the community's goals and addressing the evolving needs of the city.

IMPLEMENTATION OF THE TMP:

Implementation of the TMP will require ongoing coordination with staff, our elected officials, and our citizens. Securing funding for these projects over the next 25+ years is paramount and without it, these projects will not be able to move forward in the timeframe they are recommended. Staff will continue to request needed funds based on the plans recommendations in upcoming annual budget cycles, and coordinate with federal, state, and regional partners to pursue external funding opportunities. The expectations also need to be in place that many transportation projects move at their own pace and it may take multiple years for a project to become shovel ready. Many projects require survey, concept development, design/engineering, right-of-way property acquisition, and utility relocation before they can be constructed.

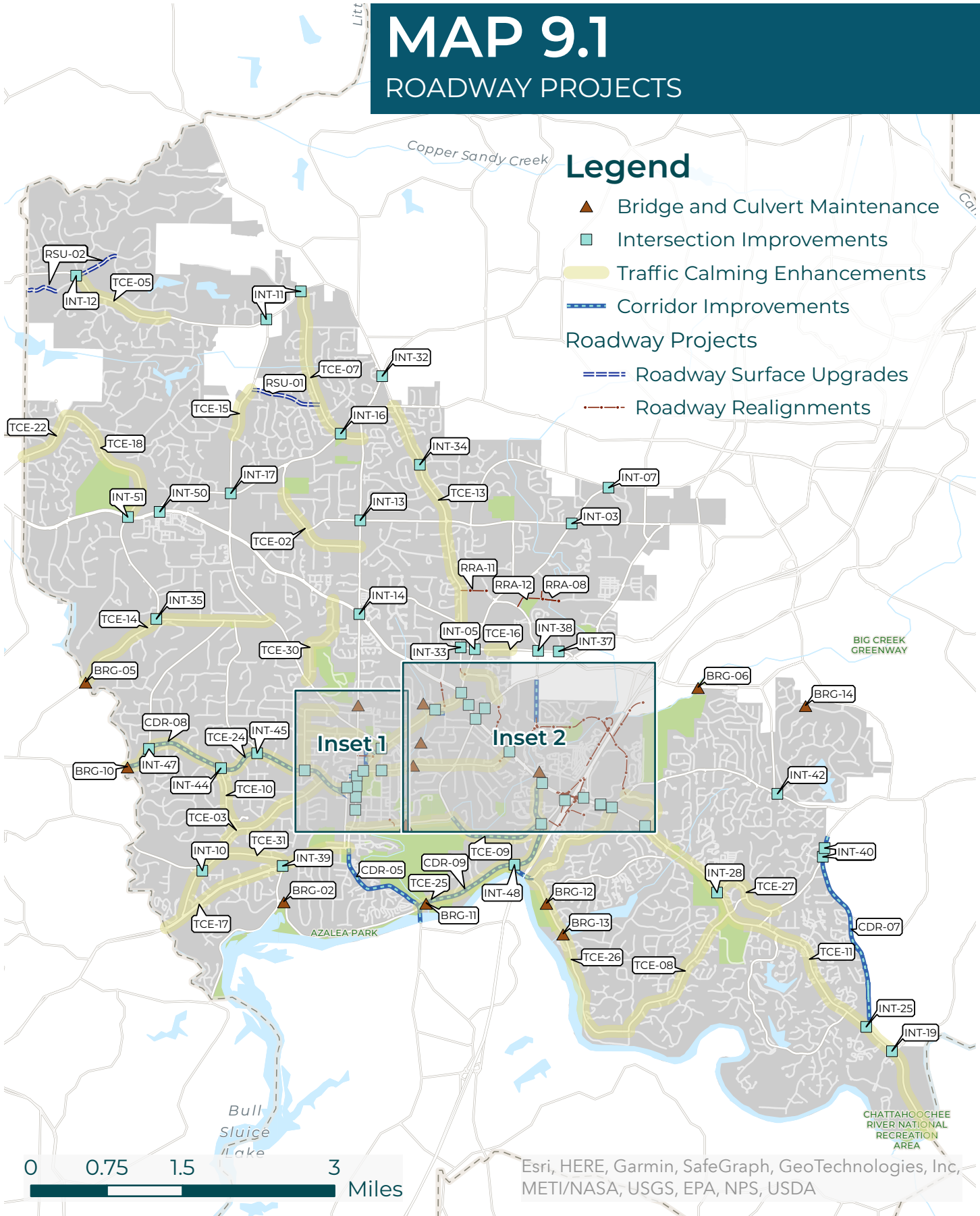
Staff are also working to improve internal best practices to develop a traffic calming program, a more robust repaving program, and improve the ways we inspect projects. RDOT is also exploring the use on internal in-house forces to help perform smaller projects (i.e. sidewalks) to expedite project delivery. The TMP is intended to be a living document and it's anticipated there will be further updates to the plan based on new information, guidance, or policy set by City leadership.

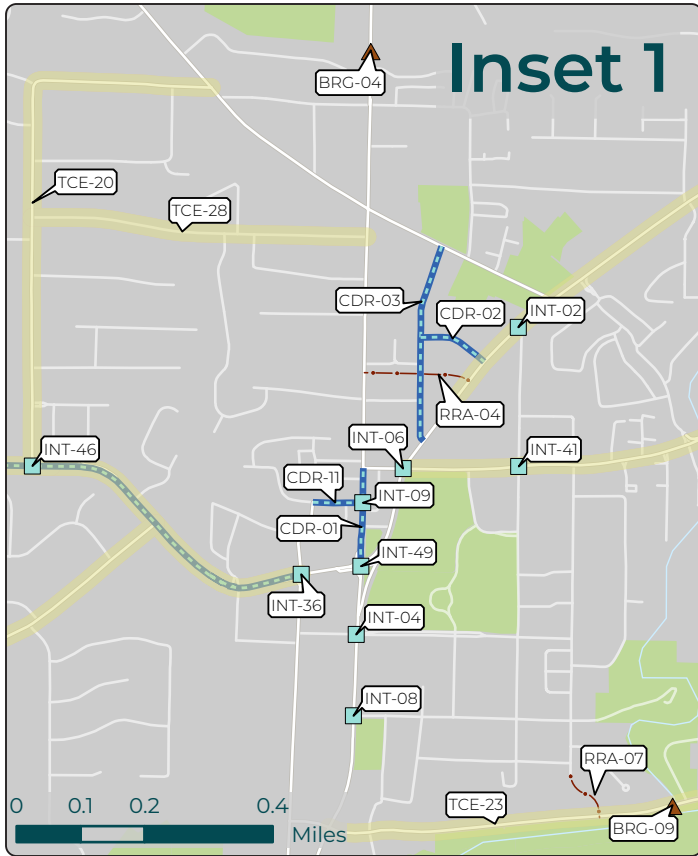
MAP 9.1

ROADWAY PROJECTS

Legend

- ▲ Bridge and Culvert Maintenance
 - Intersection Improvements
 - ▬ Traffic Calming Enhancements
 - ▬▬▬ Corridor Improvements
- Roadway Projects**
- ▬▬▬ Roadway Surface Upgrades
 - - - Roadway Realignments

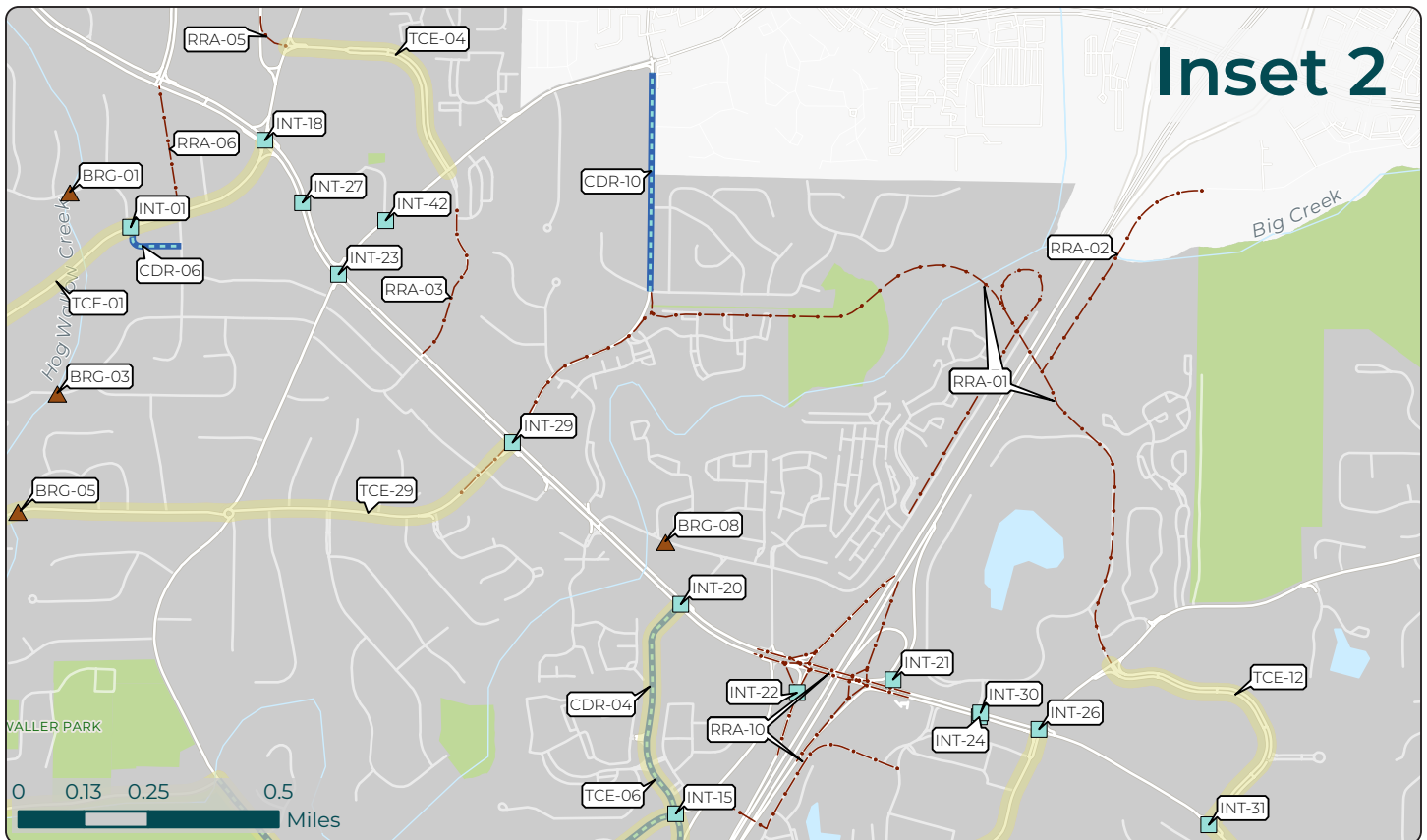




Legend

- ▲ Bridge and Culvert Maintenance
 - Intersection Improvements
 - Traffic Calming Enhancements
 - Corridor Improvements
- ### Roadway Projects
- - - Roadway Surface Upgrades
 - - - Roadway Realignments

Esri, HERE, Garmin, SafeGraph, GeoTechnologies, Inc, METI/NASA, USGS, EPA, NPS, US Census Bureau, USDA



Project Category	TMP Project Identifier	Project Name	From/At	To	TIER (subject to change)
Bridges	BRG-01	Alpine Drive – (Culvert)	Hog Wallow Creek	–	TIER 2
Bridges	BRG-02	Azalea Drive	Chattahoochee River Tributary	–	TIER 2
Bridges	BRG-03	Charles Place	Hog Wallow Creek	–	TIER 1
Bridges	BRG-04	Crabapple Road – (Culvert)	Tributary	–	TIER 2
Bridges	BRG-05	Jones Road	Willeo Creek	–	TIER 1
Bridges	BRG-06	Mansell Road (EBL)	Big Creek	–	TIER 2
Bridges	BRG-07	Norcross Street	Hog Wallow Creek	–	TIER 1
Bridges	BRG-08	Old Holcomb Bridge Road	Big Creek	–	TIER 1
Bridges	BRG-09	Oxbo Road	Hog Wallow Creek	–	TIER 1
Bridges	BRG-10	Pine Grove Road	Willeo Creek Tributary	–	TIER 2
Bridges	BRG-11	Riverside Road	Big Creek	–	TIER 1
Bridges	BRG-12	Riverside Road	Chattahoochee River Tributary	–	TIER 2
Bridges	BRG-13	Riverside Road	Seven Branch	–	TIER 2
Bridges	BRG-14	Roxburgh Drive – (Culvert)	Big Creek Tributary	–	TIER 2
Corridor Improvements	CDR-01	Canton Street	SR-9 near Elizabeth Way	Near Webb St / Norcross Street	TIER 1
Corridor Improvements	CDR-02	Cherry Way	Green Street	Alpharetta Street (SR 9/120)	TIER 2
Corridor Improvements	CDR-03	Green Street	Alpharetta Street (SR 9/120)	Woodstock Street	TIER 1
Corridor Improvements	CDR-04	Grimes Bridge Road	Oxbo Road	Dogwood Road	TIER 1
Corridor Improvements	CDR-05	Historic Gateway (SR 9)	Chattahoochee River	Marietta Highway (SR 120)	TIER 1
Corridor Improvements	CDR-06	Horton Drive	Alpharetta Street (SR 9/120)	Mansell Circle	TIER 1
Corridor Improvements	CDR-07	Nesbit Ferry Road	Holcomb Bridge Road (SR 140)	Old Alabama Road (in Johns Creek)	TIER 1
Corridor Improvements	CDR-08	Pine Grove Road	City Limits at Cobb County	Mimosa Boulevard	TIER 1
Corridor Improvements	CDR-09	Riverside Road	Rivera Road	Dogwood Road	TIER 1
Corridor Improvements	CDR-10	Warsaw Road Safety Improvements	Worthington Hills Drive	Just south of Old Roswell Road	TIER 2
Corridor Improvements	CDR-11	Webb Street	Mimosa Boulevard	Canton Street	TIER 1
Intersection Improvements	INT-01	Alpharetta Hwy (SR 9)	Alpine Drive / Horton Drive	–	TIER 3
Intersection Improvements	INT-02	Alpharetta Hwy (SR 9)	Fraser Street	–	TIER 3
Intersection Improvements	INT-03	Alpharetta Hwy (SR 9)	Hembree Road	–	TIER 1
Intersection Improvements	INT-04	Alpharetta Hwy (SR 9)	Hill Street / Ramsey Street	–	TIER 2
Intersection Improvements	INT-05	Alpharetta Hwy (SR 9)	Mansell Road	–	TIER 1
Intersection Improvements	INT-06	Alpharetta Hwy (SR 9)	Norcross Street	–	TIER 2
Intersection Improvements	INT-07	Alpharetta Hwy (SR 9)	Upper Hembree Road	–	TIER 2
Intersection Improvements	INT-08	Atlanta Street (SR 9/120)	Oak Street	–	TIER 3
Intersection Improvements	INT-09	Canton Street	Webb Street	–	TIER 1
Intersection Improvements	INT-10	Coleman Road	Willeo Road (west)	–	TIER 3
Intersection Improvements	INT-11	Cox Road	Etris Road and King Road	–	TIER 1
Intersection Improvements	INT-12	Cox Road	Lackey Road / Lum Crowe	–	TIER 3
Intersection Improvements	INT-13	Crabapple Road	Hembree Road	–	TIER 1
Intersection Improvements	INT-14	Crossville Road (SR 92)	Crabapple Road	–	TIER 1
Intersection Improvements	INT-15	Grimes Bridge Road	Dogwood Road	–	TIER 2
Intersection Improvements	INT-16	Hardscrabble Road	Etris Road	–	TIER 2
Intersection Improvements	INT-17	Hardscrabble Road	King Road	–	TIER 1
Intersection Improvements	INT-18	Holcomb Bridge Road (SR 140)	Alpharetta Hwy (SR 9)	–	TIER 1
Intersection Improvements	INT-19	Holcomb Bridge Road (SR 140)	Barnwell Road	–	TIER 1
Intersection Improvements	INT-20	Holcomb Bridge Road (SR 140)	Dogwood Road	–	TIER 2
Intersection Improvements	INT-21	Holcomb Bridge Road (SR 140)	GA 400 NB Ramp	–	TIER 1

Project Category	TMP Project Identifier	Project Name	From/At	To	TIER (subject to change)
Intersection Improvements	INT-22	Holcomb Bridge Road (SR 140)	GA 400 SB Ramp	—	TIER 1
Intersection Improvements	INT-23	Holcomb Bridge Road (SR 140)	Grimes Bridge Road/Old Roswell Road	—	TIER 1
Intersection Improvements	INT-24	Holcomb Bridge Road (SR 140)	Market Boulevard	—	TIER 2
Intersection Improvements	INT-25	Holcomb Bridge Road (SR 140)	Nesbit Ferry Road	—	TIER 1
Intersection Improvements	INT-26	Holcomb Bridge Road (SR 140)	Old Alabama Road	—	TIER 2
Intersection Improvements	INT-27	Holcomb Bridge Road (SR 140)	Old Roswell Place	—	TIER 2
Intersection Improvements	INT-28	Holcomb Bridge Road (SR 140)	Scott Road	—	TIER 3
Intersection Improvements	INT-29	Holcomb Bridge Road (SR 140)	Warsaw Road	—	TIER 1
Intersection Improvements	INT-30	Holcomb Bridge Road (SR 140)	at/near Market Blvd / Market Way	—	TIER 3
Intersection Improvements	INT-31	Holcomb Woods Parkway	Holcomb Bridge Road (SR 140)	—	TIER 2
Intersection Improvements	INT-32	Houze Road (SR 140)	Crabapple Road	—	TIER 2
Intersection Improvements	INT-33	Houze Road (SR 140)	Mansell Road	—	TIER 2
Intersection Improvements	INT-34	Houze Road (SR 140)	Saddle Creek Drive	—	TIER 3
Intersection Improvements	INT-35	Jones Road	Bowen Road	—	TIER 3
Intersection Improvements	INT-36	Magnolia Street	Mimosa Boulevard	—	TIER 3
Intersection Improvements	INT-37	Mansell Road	Colonial Center Parkway	—	TIER 2
Intersection Improvements	INT-38	Mansell Road	Warsaw Road	—	TIER 2
Intersection Improvements	INT-39	Marietta Hwy (SR 120)	Willeo Road	—	TIER 2
Intersection Improvements	INT-40	Nesbit Ferry Road	Scott Road and Nesbit Lakes Drive	—	TIER 1
Intersection Improvements	INT-41	Norcross Street	Fraser Street/Forrest Street	—	TIER 3
Intersection Improvements	INT-42	Old Alabama Road	Old Alabama Road Connector/Roxburgh	—	TIER 2
Intersection Improvements	INT-43	Old Roswell Road	Old Roswell Place	—	TIER 2
Intersection Improvements	INT-44	Pine Grove Road	Hightower Road/Waterford Way	—	TIER 1
Intersection Improvements	INT-45	Pine Grove Road	Lake Charles Road	—	TIER 1
Intersection Improvements	INT-46	Pine Grove Road	North Coleman Road	—	TIER 1
Intersection Improvements	INT-47	Pine Grove Road	Shallowford Road	—	TIER 1
Intersection Improvements	INT-48	Riverside Road	Dogwood Road	—	TIER 2
Intersection Improvements	INT-49	SR 9/120 (Village Center)	Magnolia Street/Canton Street	—	TIER 2
Intersection Improvements	INT-50	Woodstock Rd (SR 92)	Hardscrabble Road	—	TIER 1
Intersection Improvements	INT-51	Woodstock Rd (SR 92)	Mtn. Park / Bowen Road	—	TIER 1
Roadway Realignments	RRA-01	Big Creek Parkway	Holcomb Bridge Road (SR 140) (west of	Holcomb Bridge Road (SR 140) (east of S	TIER 1
Roadway Realignments	RRA-02	Big Creek Parkway, Phase 3	Big Creek Parkway	North Point Parkway	TIER 2
Roadway Realignments	RRA-03	Commerce Parkway Extension	Old Roswell Road	Holcomb Bridge Road (SR 140)	TIER 2
Roadway Realignments	RRA-04	Green Street Connector	Canton Street	Alpharetta Highway (SR 9/120)	TIER 1
Roadway Realignments	RRA-05	Houze Road Realignment	Existing Roadway	SR 9/120 at Commerce Parkway	TIER 2
Roadway Realignments	RRA-06	Mansell Road Extension	Alpharetta Highway (SR 9/120)	Crossville Road (SR 92)	TIER 2
Roadway Realignments	RRA-07	Myrtle Street Extension	Existing Roadway	Oxbo Road	TIER 3
Roadway Realignments	RRA-08	Old Ellis-Mansell Connector	Mansell Place	Old Ellis Road	TIER 3
Roadway Realignments	RRA-09	Riverwalk Emergency Access	Riverwalk Drive	Azalea Drive	TIER 2
Roadway Realignments	RRA-10	SR 400 at Holcomb Bridge Road (SR 140)	SR 400	Holcomb Bridge Road (SR 140)	TIER 1
Roadway Realignments	RRA-11	Sun Valley-Houze Road Connector	Houze Road (SR 140)	Existing Roadway	TIER 2
Roadway Realignments	RRA-12	Sun Valley-Old Ellis Connector	Sun Valley Extension	Old Ellis Road	TIER 1
Roadway Surface Upgrades	RSU-01	Kent Road	King Road	Etris Road	TIER 3
Roadway Surface Upgrades	RSU-02	Lum Crowe Road	City Limits	City Limits	TIER 3

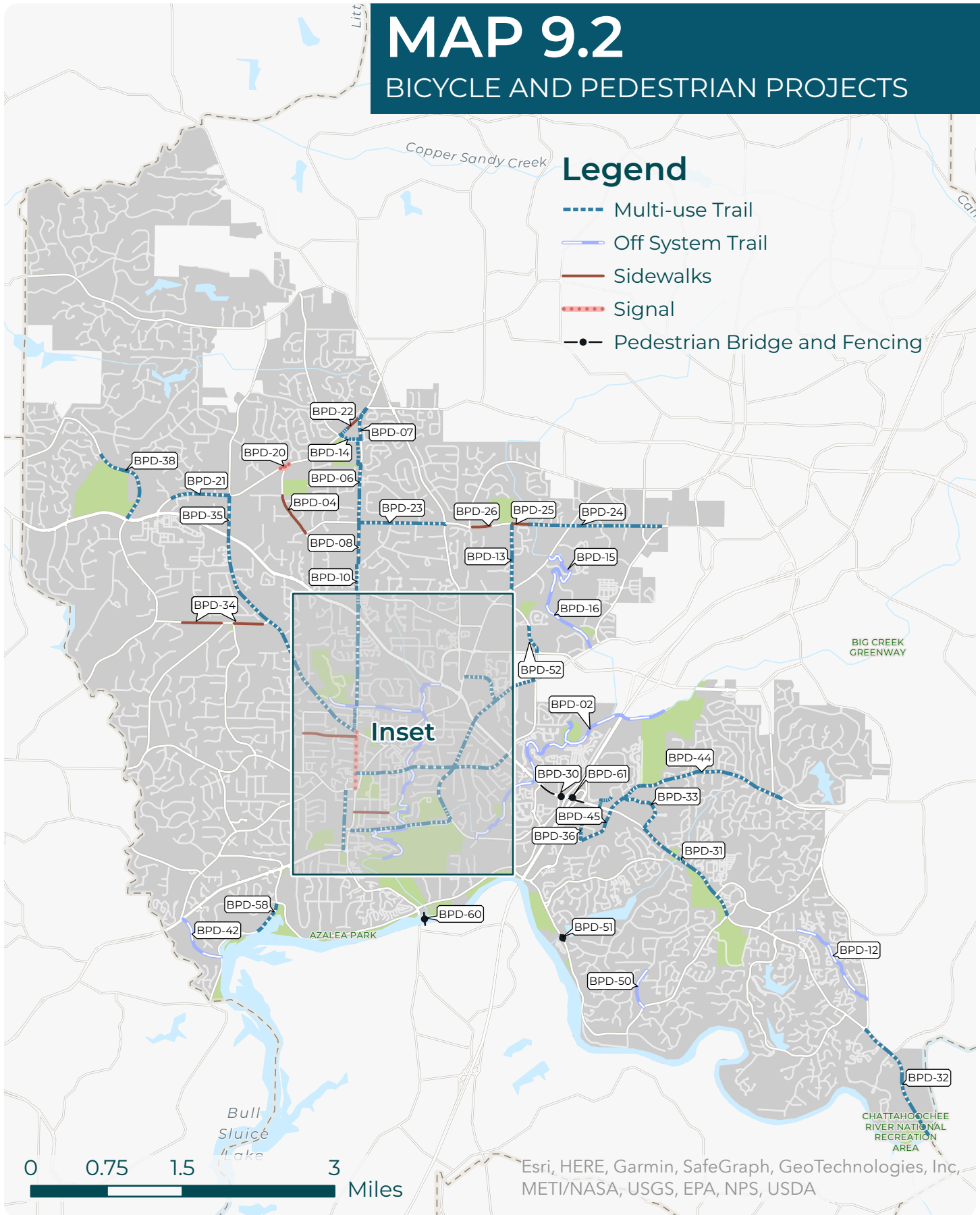
Project Category	TMP Project Identifier	Project Name	From/At	To	TIER (subject to change)
Traffic Calming Enhancements	TCE-01	Alpharetta Highway (SR 9/120)	Norcross Street	Holcomb Bridge Road (SR 140)	TIER 1
Traffic Calming Enhancements	TCE-02	Chaffin Road	Coleman Drive	Crabapple Road	TIER 3
Traffic Calming Enhancements	TCE-03	Coleman Road	Pine Grove Road	Marietta Highway (SR 120)	TIER 1
Traffic Calming Enhancements	TCE-04	Commerce Parkway	Holcomb Bridge Road (SR 140)	Old Roswell Road	TIER 2
Traffic Calming Enhancements	TCE-05	Cox Road	Lackey Road	Litchfield Drive	TIER 3
Traffic Calming Enhancements	TCE-06	Dogwood Road	Holcomb Bridge Road (SR 140)	Riverside Road	TIER 1
Traffic Calming Enhancements	TCE-07	Etris Road	City Limits	Crabapple Road	TIER 3
Traffic Calming Enhancements	TCE-08	Eves Road	Riverside Road	Holcomb Bridge Road (SR 140)	TIER 2
Traffic Calming Enhancements	TCE-09	Grimes Bridge Road	Meadowood Drive	Dogwood Road	TIER 1
Traffic Calming Enhancements	TCE-10	Hightower Road	Pine Grove Road	Coleman Road	TIER 2
Traffic Calming Enhancements	TCE-11	Holcomb Bridge Road (SR 140)	Holcomb Woods Parkway	City Limits	TIER 2
Traffic Calming Enhancements	TCE-12	Holcomb Woods Parkway	Old Alabama Road	Holcomb Bridge Road (SR 140)	TIER 2
Traffic Calming Enhancements	TCE-13	Houze Road (SR 140)	Houze Way	City Limits	TIER 3
Traffic Calming Enhancements	TCE-14	Jones Road	City Limits	Woodstock Road	TIER 2
Traffic Calming Enhancements	TCE-15	King Road	Kent Road	Chaffin Road	TIER 3
Traffic Calming Enhancements	TCE-16	Mansell Road	Holcomb Bridge Road (SR 140)	City Limits	TIER 3
Traffic Calming Enhancements	TCE-17	Marietta Highway (SR 120)	City Limits	Alpharetta Highway (SR 9)	TIER 2
Traffic Calming Enhancements	TCE-18	Mountain Park Road	Woodstock Road (SR 92)	Old Mountain Park Road	TIER 3
Traffic Calming Enhancements	TCE-19	Norcross Street	Alpharetta Highway (SR 9/120)	Warsaw Road	TIER 2
Traffic Calming Enhancements	TCE-20	North Coleman Road	Pine Grove Road	Woodstock Road	TIER 2
Traffic Calming Enhancements	TCE-21	Old Alabama Road	Riverside Road	Holcomb Bridge Road (SR 140)	TIER 1
Traffic Calming Enhancements	TCE-22	Old Mountain Park Road	Mountain Park Road	City Limits	TIER 1
Traffic Calming Enhancements	TCE-23	Oxbo Road	Alpharetta Highway (SR 9/120)	Grimes Bridge Road	TIER 1
Traffic Calming Enhancements	TCE-24	Pine Grove Road	City Limits	Mimosa Boulevard	TIER 1
Traffic Calming Enhancements	TCE-25	Riverside Road	Dogwood Road	Azalea Drive	TIER 1
Traffic Calming Enhancements	TCE-26	Riverside Road	Old Alabama Road	Eves Road	TIER 1
Traffic Calming Enhancements	TCE-27	Scott Road	Holcomb Bridge Road (SR 140)	Old Scott Road	TIER 1
Traffic Calming Enhancements	TCE-28	Thompson Place	North Coleman Road	Canton Street	TIER 3
Traffic Calming Enhancements	TCE-29	Warsaw Road	Norcross Street	Holcomb Bridge Road (SR 140)	TIER 1
Traffic Calming Enhancements	TCE-30	Wavetree Drive	Crossville Highway (SR 92)	Woodstock Road	TIER 1
Traffic Calming Enhancements	TCE-31	Willeo Road	Coleman Road	Marietta Highway (SR 120)	TIER 2

MAP 9.2

BICYCLE AND PEDESTRIAN PROJECTS

Legend

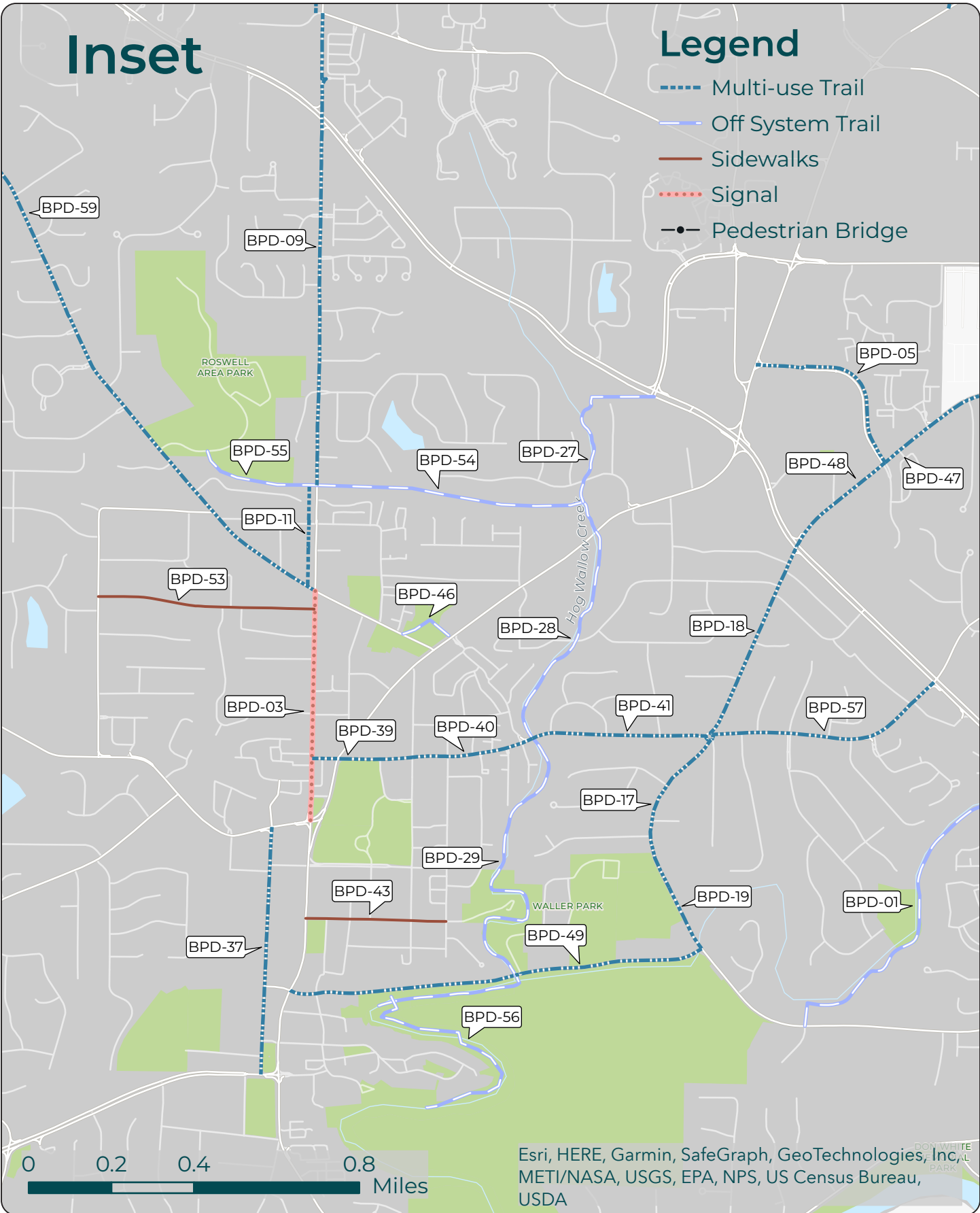
- Multi-use Trail
- Off System Trail
- Sidewalks
- Signal
- Pedestrian Bridge and Fencing



Inset

Legend

- Multi-use Trail
- Off System Trail
- Sidewalks
- Signal
- Pedestrian Bridge



TMP Project Identifier	Project Name	From/At	To	TIER (subject to change)	Project Type
BPD-01	Big Creek (waterway)	Grimes Bridge Road	SR 140 / Holcomb Bridge Road	TIER 3	Off System Trail
BPD-02	Big Creek (waterway)	SR 140 / Holcomb Bridge Road	Big Creek Park	TIER 1	Off System Trail
BPD-03	Canton Street	Woodstock Road	SR 9	TIER 1	Signal
BPD-04	Chaffin Road	Hembree Road	Coleman Drive	TIER 1	Sidewalks
BPD-05	Commerce Parkway	Old Roswell Road	SR 9	TIER 3	Multi-use Trail
BPD-06	Crabapple Road	Etris Road	Hembree Road	TIER 3	Multi-use Trail
BPD-07	Crabapple Road	Hardscrabble Road	Etris Road	TIER 3	Multi-use Trail
BPD-08	Crabapple Road	Hembree Road	Strickland Road	TIER 2	Multi-use Trail
BPD-09	Crabapple Road	Houze Way	Planned Off System Trail	TIER 3	Multi-use Trail
BPD-10	Crabapple Road	Strickland Road	Houze Way	TIER 3	Multi-use Trail
BPD-11	Crabapple Road/Canton Street	Planned Off-System Trail	Woodstock Road	TIER 2	Multi-use Trail
BPD-12	East Roswell Trail/Champions Green Parkway/Powder Ridge	Scott Road	Nesbitt Ferry Road	TIER 2	Off System Trail
BPD-13	Elkins Road	Alpharetta Highway (SR 9)		TIER 2	Multi-use Trail
BPD-14	Etris Road	Hardscrabble Road	Crabapple Road	TIER 3	Multi-use Trail
BPD-15	Foe Killer Creek	Elkins Road	Old Ellis Road extension	TIER 3	Off System Trail
BPD-16	Foe Killer Creek	Old Ellis Road extension	Old Roswell Road	TIER 3	Off System Trail
BPD-17	Grimes Bridge Road	Adult Rec Center (ARC) entrance	Norcross Street	TIER 2	Multi-use Trail
BPD-18	Grimes Bridge Road	Norcross Street	Holcomb Bridge Road	TIER 2	Multi-use Trail
BPD-19	Grimes Bridge Road	Oxbo Road	Adult Rec Center (ARC) entrance	TIER 2	Multi-use Trail
BPD-20	Hardscrabble Road	King Road	Etris Road	TIER 3	Signal
BPD-21	Hardscrabble Road	Whittingham Place	King Road	TIER 1	Multi-use Trail
BPD-22	Hardscrabble Road/Crabapple Road	Etris Road	Rucker Road	TIER 3	Sidewalks
BPD-23	Hembree Road	Crabapple Road	Houze Road	TIER 3	Multi-use Trail
BPD-24	Hembree Road	Elkins Road	Old Roswell Road	TIER 2	Multi-use Trail
BPD-25	Hembree Road	Hembree Park	Cross of Life Montessori School	TIER 1	Sidewalks
BPD-26	Hembree Road	Upper Hembree Road	Tapestry Community Church	TIER 1	Sidewalks
BPD-27	Hog Wallow Creek	Alpharetta Highway (SR 9)	Crossville Road (SR 92)	TIER 2	Off System Trail
BPD-28	Hog Wallow Creek	Norcross Street	Alpharetta Street (SR 9/120)	TIER 2	Off System Trail
BPD-29	Hog Wallow Creek	Oxbo Road	Norcross Street	TIER 2	Off System Trail
BPD-30	Holcomb Bridge Road (SR 140)	Dogwood Road	SR-400 SB on/off ramps	TIER 2	Multi-use Trail
BPD-31	Holcomb Bridge Road (SR 140)	Holcomb Woods Pkwy	Eves Road	TIER 1	Multi-use Trail
BPD-32	Holcomb Bridge Road (SR 140)	Nesbit Ferry Road	Gwinnett County Line	TIER 2	Multi-use Trail
BPD-33	Holcomb Woods Parkway	Holcomb Bridge Road	Old Alabama Road	TIER 2	Multi-use Trail
BPD-34	Jones Road	Existing Sidewalk	Shallowford Road	TIER 2	Sidewalks
BPD-35	King Road	SR 92/Woodstock Rd	Hardscrabble Road	TIER 1	Multi-use Trail
BPD-36	Market Boulevard	Old Alabama Road	Kimberly Clark Driveway	TIER 2	Multi-use Trail
BPD-37	Mimosa Blvd/ Oxbo Road	Magnolia St	SR 9	TIER 2	Multi-use Trail
BPD-38	Mountain Park Road	SR-92/Woodstock Rd	Mountain Park Elementary	TIER 3	Multi-use Trail
BPD-39	Norcross Street	Canton Street	Fraser St/Forrest St	TIER 2	Multi-use Trail
BPD-40	Norcross Street	Fraser St/Forrest St	Norcross Street Bridge	TIER 2	Multi-use Trail
BPD-41	Norcross Street	Norcross Street Bridge	Grimes Bridge Road	TIER 2	Multi-use Trail
BPD-42	N-S Corridor	Marietta Highway (SR 120)	Willeo Road	TIER 2	Off System Trail
BPD-43	Oak St	SR 9	Myrtle Street	TIER 3	Sidewalks
BPD-44	Old Alabama Road	Big Creek Park Driveway	Roxburgh Drive	TIER 1	Multi-use Trail
BPD-45	Old Alabama Road	Market Boulevard	Big Creek Park Driveway	TIER 1	Multi-use Trail
BPD-46	Old Roswell Cemetery Trail	Woodstock Road	Alpharetta Highway (SR 9)	TIER 1	Off System Trail
BPD-47	Old Roswell Road	Commerce Parkway	Warsaw Road	TIER 3	Multi-use Trail
BPD-48	Old Roswell Road	Holcomb Bridge Road	Commerce Parkway	TIER 2	Multi-use Trail
BPD-49	Oxbo Road	Atlanta Street (SR 9)	Grimes Bridge Road	TIER 1	Multi-use Trail
BPD-50	Planned Off System Trail	Eves Road	Eves Cir	TIER 1	Off System Trail
BPD-51	Riverside Road Pedestrian Bridge	Near Martins Landing dam	—	TIER 1	Pedestrian Bridge
BPD-52	Sun Valley Drive	Mansell Road	Finchely Drive	TIER 3	Multi-use Trail
BPD-53	Thompson Place	North Coleman Road	Canton Street	TIER 3	Sidewalks

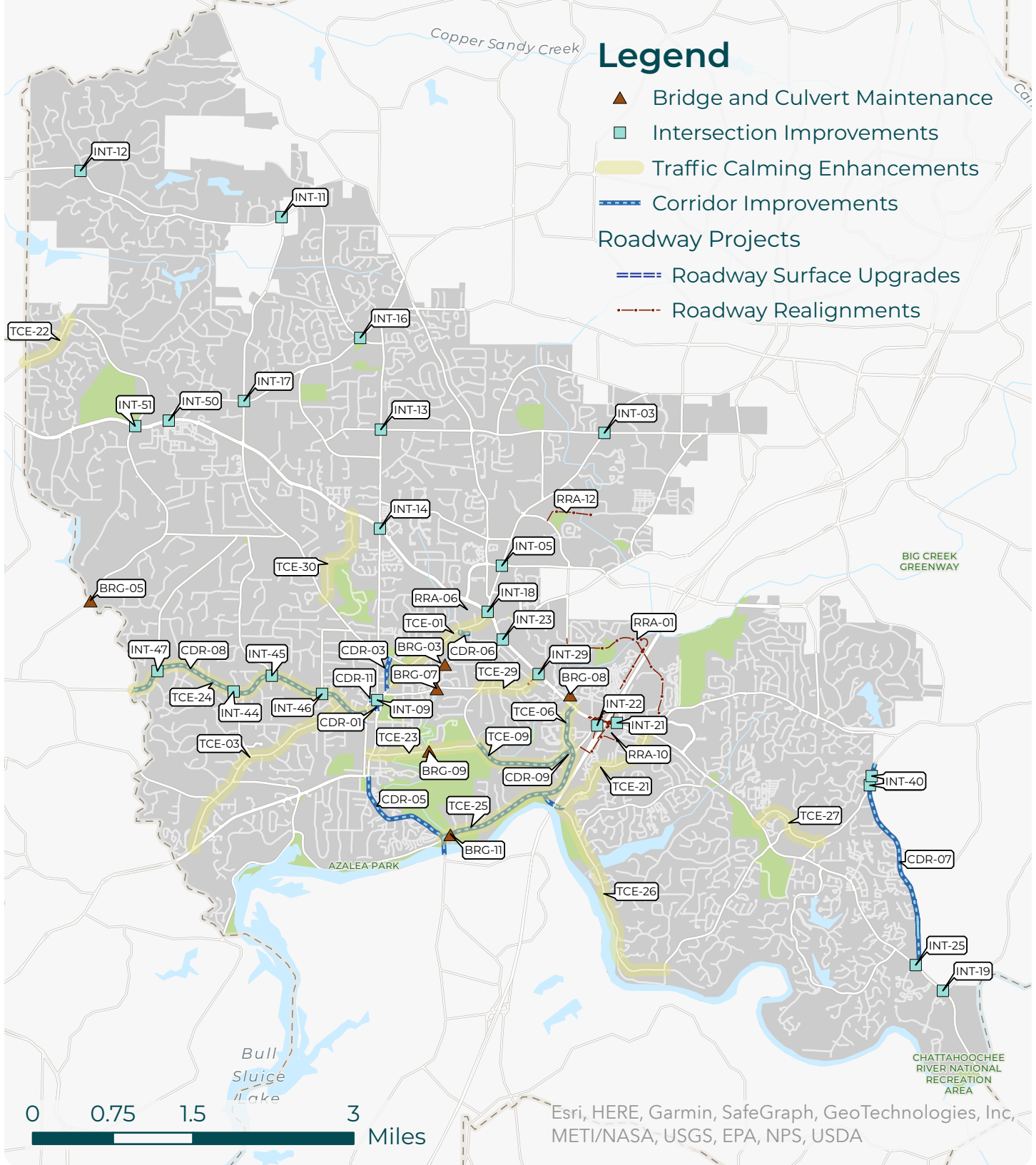
TMP Project Identifier	Project Name	From/At	To	TIER (subject to change)	Project Type
BPD-54	Un-named E-W Creek	Crabapple Road	Hog Wallow Creek	TIER 3	Off System Trail
BPD-55	Un-named E-W Creek	Roswell Area Park	Crabapple Road	TIER 3	Off System Trail
BPD-56	Vickery Creek	Oxbo Road	Waterfall by Mill Ruins	TIER 1	Off System Trail
BPD-57	Warsaw Road	Grimes Bridge Road/Norcross St round	Holcomb Bridge Road (SR 140)	TIER 2	Multi-use Trail
BPD-58	Willeo Road	Near Boardwalk Connection	Azalea Drive	TIER 2	Multi-use Trail
BPD-59	Woodstock Road	Canton Street	SR-92/Woodstock Rd	TIER 1	Multi-use Trail
BPD-61	SR-400 / Holcomb Bridge Road intercha	Holcomb Bridge Road	n/a	TIER 2	Multi-use Trail
BPD-60	SR 9 over Chattahoochee River Ped Brid	Roberts Drive (in Sandy Springs)	Riverside Road/Azalea Drive	TIER 2	Pedestrian Bridge

MAP 9.3

TIER 1 ROADWAY PROJECTS

Legend

- ▲ Bridge and Culvert Maintenance
- Intersection Improvements
- ▬ Traffic Calming Enhancements
- ▬ Corridor Improvements
- ▬ Roadway Projects
 - ▬▬ Roadway Surface Upgrades
 - ▬▬▬ Roadway Realignments



Project Category	TMP Project Identifier	Project Name	From/At	To	TIER (subject to change)
Bridges	BRG-03	Charles Place	Hog Wallow Creek	—	TIER 1
Bridges	BRG-05	Jones Road	Willeo Creek	—	TIER 1
Bridges	BRG-07	Norcross Street	Hog Wallow Creek	—	TIER 1
Bridges	BRG-08	Old Holcomb Bridge Road	Big Creek	—	TIER 1
Bridges	BRG-09	Oxbo Road	Hog Wallow Creek	—	TIER 1
Bridges	BRG-11	Riverside Road	Big Creek	—	TIER 1
Corridor Improvements	CDR-01	Canton Street	SR-9 near Elizabeth Way	Near Webb St / Norcross Street	TIER 1
Corridor Improvements	CDR-03	Green Street	Alpharetta Street (SR 9/120)	Woodstock Street	TIER 1
Corridor Improvements	CDR-04	Grimes Bridge Road	Oxbo Road	Dogwood Road	TIER 1
Corridor Improvements	CDR-05	Historic Gateway (SR 9)	Chattahoochee River	Marietta Highway (SR 120)	TIER 1
Corridor Improvements	CDR-06	Horton Drive	Alpharetta Street (SR 9/120)	Mansell Circle	TIER 1
Corridor Improvements	CDR-07	Nesbit Ferry Road	Holcomb Bridge Road (SR 140)	Old Alabama Road (in Johns Creek)	TIER 1
Corridor Improvements	CDR-08	Pine Grove Road	City Limits at Cobb County	Mimosa Boulevard	TIER 1
Corridor Improvements	CDR-09	Riverside Road	Rivera Road	Dogwood Road	TIER 1
Corridor Improvements	CDR-11	Webb Street	Mimosa Boulevard	Canton Street	TIER 1
Intersection Improvements	INT-03	Alpharetta Hwy (SR 9)	Hembree Road	—	TIER 1
Intersection Improvements	INT-05	Alpharetta Hwy (SR 9)	Mansell Road	—	TIER 1
Intersection Improvements	INT-09	Canton Street	Webb Street	—	TIER 1
Intersection Improvements	INT-11	Cox Road	Etris Road and King Road		TIER 1
Intersection Improvements	INT-13	Crabapple Road	Hembree Road	—	TIER 1
Intersection Improvements	INT-14	Crossville Road (SR 92)	Crabapple Road	—	TIER 1
Intersection Improvements	INT-17	Hardscrabble Road	King Road	—	TIER 1
Intersection Improvements	INT-18	Holcomb Bridge Road (SR 140)	Alpharetta Hwy (SR 9)	—	TIER 1
Intersection Improvements	INT-19	Holcomb Bridge Road (SR 140)	Barnwell Road	—	TIER 1
Intersection Improvements	INT-21	Holcomb Bridge Road (SR 140)	GA 400 NB Ramp	—	TIER 1
Intersection Improvements	INT-22	Holcomb Bridge Road (SR 140)	GA 400 SB Ramp	—	TIER 1
Intersection Improvements	INT-23	Holcomb Bridge Road (SR 140)	Grimes Bridge Road/Old Roswell Road	—	TIER 1
Intersection Improvements	INT-25	Holcomb Bridge Road (SR 140)	Nesbit Ferry Road	—	TIER 1
Intersection Improvements	INT-29	Holcomb Bridge Road (SR 140)	Warsaw Road	—	TIER 1
Intersection Improvements	INT-40	Nesbit Ferry Road	Scott Road and Nesbit Lakes Drive	—	TIER 1
Intersection Improvements	INT-44	Pine Grove Road	Hightower Road/Waterford Way	—	TIER 1
Intersection Improvements	INT-45	Pine Grove Road	Lake Charles Road	—	TIER 1
Intersection Improvements	INT-46	Pine Grove Road	North Coleman Road	—	TIER 1
Intersection Improvements	INT-47	Pine Grove Road	Shallowford Road	—	TIER 1
Intersection Improvements	INT-50	Woodstock Rd (SR 92)	Hardscrabble Road	—	TIER 1
Intersection Improvements	INT-51	Woodstock Rd (SR 92)	Mtn. Park / Bowen Road	—	TIER 1
Roadway Realignments	RRA-01	Big Creek Parkway	Holcomb Bridge Road (SR 140) (west of	Holcomb Bridge Road (SR 140) (east of S	TIER 1
Roadway Realignments	RRA-04	Green Street Connector	Canton Street	Alpharetta Highway (SR 9/120)	TIER 1

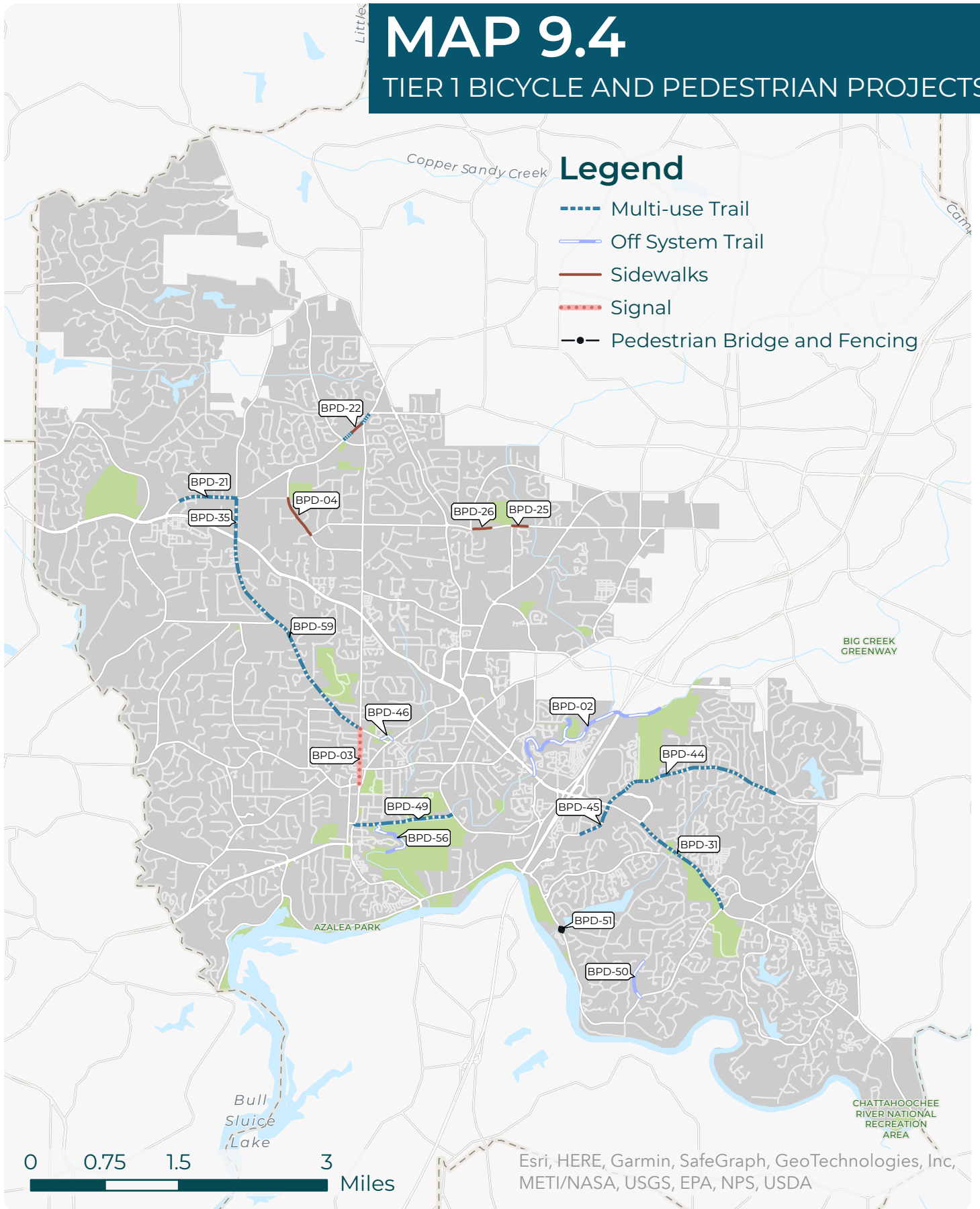
Project Category	TMP Project Identifier	Project Name	From/At	To	TIER (subject to change)
Roadway Realignments	RRA-10	SR 400 at Holcomb Bridge Road (SR 140)	SR 400	Holcomb Bridge Road (SR 140)	TIER 1
Roadway Realignments	RRA-12	Sun Valley-Old Ellis Connector	Sun Valley Extension	Old Ellis Road	TIER 1
Traffic Calming Enhancements	TCE-01	Alpharetta Highway (SR 9/120)	Norcross Street	Holcomb Bridge Road (SR 140)	TIER 1
Traffic Calming Enhancements	TCE-03	Coleman Road	Pine Grove Road	Marietta Highway (SR 120)	TIER 1
Traffic Calming Enhancements	TCE-06	Dogwood Road	Holcomb Bridge Road (SR 140)	Riverside Road	TIER 1
Traffic Calming Enhancements	TCE-09	Grimes Bridge Road	Meadowood Drive	Dogwood Road	TIER 1
Traffic Calming Enhancements	TCE-21	Old Alabama Road	Riverside Road	Holcomb Bridge Road (SR 140)	TIER 1
Traffic Calming Enhancements	TCE-22	Old Mountain Park Road	Mountain Park Road	City Limits	TIER 1
Traffic Calming Enhancements	TCE-23	Oxbo Road	Alpharetta Highway (SR 9/120)	Grimes Bridge Road	TIER 1
Traffic Calming Enhancements	TCE-24	Pine Grove Road	City Limits	Mimosa Boulevard	TIER 1
Traffic Calming Enhancements	TCE-25	Riverside Road	Dogwood Road	Azalea Drive	TIER 1
Traffic Calming Enhancements	TCE-26	Riverside Road	Old Alabama Road	Eves Road	TIER 1
Traffic Calming Enhancements	TCE-27	Scott Road	Holcomb Bridge Road (SR 140)	Old Scott Road	TIER 1
Traffic Calming Enhancements	TCE-29	Warsaw Road	Norcross Street	Holcomb Bridge Road (SR 140)	TIER 1
Traffic Calming Enhancements	TCE-30	Wavetree Drive	Crossville Highway (SR 92)	Woodstock Road	TIER 1

MAP 9.4

TIER 1 BICYCLE AND PEDESTRIAN PROJECTS

Legend

- Multi-use Trail
- Off System Trail
- Sidewalks
- Signal
- Pedestrian Bridge and Fencing



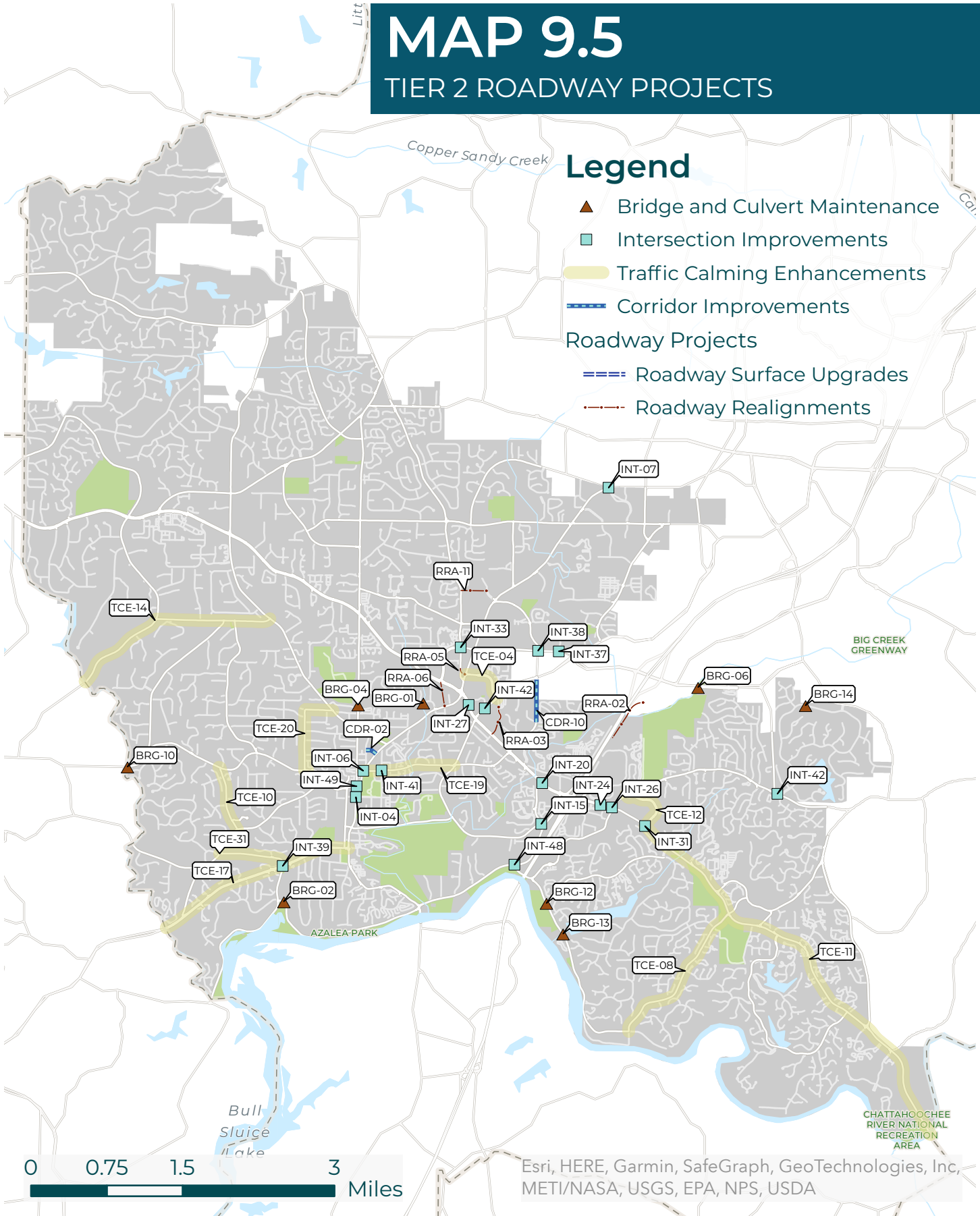
TMP Project Identifier	Project Name	From/At	To	TIER (subject to change)	Project Type
BPD-02	Big Creek (waterway)	SR 140 / Holcomb Bridge Road	Big Creek Park	TIER 1	Off System Trail
BPD-03	Canton Street	Woodstock Road	SR 9	TIER 1	Signal
BPD-04	Chaffin Road	Hembree Road	Coleman Drive	TIER 1	Sidewalks
BPD-21	Hardscrabble Road	Whittingham Place	King Road	TIER 1	Multi-use Trail
BPD-25	Hembree Road	Hembree Park	Cross of Life Montessori School	TIER 1	Sidewalks
BPD-26	Hembree Road	Upper Hembree Road	Tapestry Community Church	TIER 1	Sidewalks
BPD-31	Holcomb Bridge Road (SR 140)	Holcomb Woods Pkwy	Eves Road	TIER 1	Multi-use Trail
BPD-35	King Road	SR 92/Woodstock Rd	Hardscrabble Road	TIER 1	Multi-use Trail
BPD-44	Old Alabama Road	Big Creek Park Driveway	Roxburgh Drive	TIER 1	Multi-use Trail
BPD-45	Old Alabama Road	Market Boulevard	Big Creek Park Driveway	TIER 1	Multi-use Trail
BPD-46	Old Roswell Cemetery Trail	Woodstock Road	Alpharetta Highway (SR 9)	TIER 1	Off System Trail
BPD-49	Oxbo Road	Atlanta Street (SR 9)	Grimes Bridge Road	TIER 1	Multi-use Trail
BPD-50	Planned Off System Trail	Eves Road	Eves Cir	TIER 1	Off System Trail
BPD-51	Riverside Road Pedestrian Bridge	Near Martins Landing dam	—	TIER 1	Pedestrian Bridge
BPD-56	Vickery Creek	Oxbo Road	Waterfall by Mill Ruins	TIER 1	Off System Trail
BPD-59	Woodstock Road	Canton Street	SR-92/Woodstock Rd	TIER 1	Multi-use Trail

MAP 9.5

TIER 2 ROADWAY PROJECTS

Legend

- ▲ Bridge and Culvert Maintenance
- Intersection Improvements
- ▬ Traffic Calming Enhancements
- ▬ Corridor Improvements
- Roadway Projects**
- ▬▬▬ Roadway Surface Upgrades
- - - Roadway Realignments



Esri, HERE, Garmin, SafeGraph, GeoTechnologies, Inc, METI/NASA, USGS, EPA, NPS, USDA

Project Category	TMP Project Identifier	Project Name	From/At	To	TIER (subject to change)
Bridges	BRG-01	Alpine Drive – (Culvert)	Hog Wallow Creek	–	TIER 2
Bridges	BRG-02	Azalea Drive	Chattahoochee River Tributary	–	TIER 2
Bridges	BRG-04	Crabapple Road – (Culvert)	Tributary	–	TIER 2
Bridges	BRG-06	Mansell Road (EBL)	Big Creek	–	TIER 2
Bridges	BRG-10	Pine Grove Road	Willeo Creek Tributary	–	TIER 2
Bridges	BRG-12	Riverside Road	Chattahoochee River Tributary	–	TIER 2
Bridges	BRG-13	Riverside Road	Seven Branch	–	TIER 2
Bridges	BRG-14	Roxburgh Drive – (Culvert)	Big Creek Tributary	–	TIER 2
Corridor Improvements	CDR-02	Cherry Way	Green Street	Alpharetta Street (SR 9/120)	TIER 2
Corridor Improvements	CDR-10	Warsaw Road Safety Improvements	Worthington Hills Drive	Just south of Old Roswell Road	TIER 2
Intersection Improvements	INT-04	Alpharetta Hwy (SR 9)	Hill Street / Ramsey Street	–	TIER 2
Intersection Improvements	INT-06	Alpharetta Hwy (SR 9)	Norcross Street	–	TIER 2
Intersection Improvements	INT-07	Alpharetta Hwy (SR 9)	Upper Hembree Road	–	TIER 2
Intersection Improvements	INT-15	Grimes Bridge Road	Dogwood Road	–	TIER 2
Intersection Improvements	INT-16	Hardscrabble Road	Etris Road	–	TIER 2
Intersection Improvements	INT-20	Holcomb Bridge Road (SR 140)	Dogwood Road	–	TIER 2
Intersection Improvements	INT-24	Holcomb Bridge Road (SR 140)	Market Boulevard	–	TIER 2
Intersection Improvements	INT-26	Holcomb Bridge Road (SR 140)	Old Alabama Road	–	TIER 2
Intersection Improvements	INT-27	Holcomb Bridge Road (SR 140)	Old Roswell Place	–	TIER 2
Intersection Improvements	INT-31	Holcomb Woods Parkway	Holcomb Bridge Road (SR 140)	–	TIER 2
Intersection Improvements	INT-32	Houze Road (SR 140)	Crabapple Road	–	TIER 2
Intersection Improvements	INT-33	Houze Road (SR 140)	Mansell Road	–	TIER 2
Intersection Improvements	INT-37	Mansell Road	Colonial Center Parkway	–	TIER 2
Intersection Improvements	INT-38	Mansell Road	Warsaw Road	–	TIER 2
Intersection Improvements	INT-39	Marietta Hwy (SR 120)	Willeo Road	–	TIER 2
Intersection Improvements	INT-42	Old Alabama Road	Old Alabama Road Connector/Roxburgh	–	TIER 2
Intersection Improvements	INT-43	Old Roswell Road	Old Roswell Place	–	TIER 2
Intersection Improvements	INT-48	Riverside Road	Dogwood Road	–	TIER 2
Intersection Improvements	INT-49	SR 9/120 (Village Center)	Magnolia Street/Canton Street	–	TIER 2
Roadway Realignments	RRA-02	Big Creek Parkway, Phase 3	Big Creek Parkway	North Point Parkway	TIER 2
Roadway Realignments	RRA-03	Commerce Parkway Extension	Old Roswell Road	Holcomb Bridge Road (SR 140)	TIER 2
Roadway Realignments	RRA-05	Houze Road Realignment	Existing Roadway	SR 9/120 at Commerce Parkway	TIER 2
Roadway Realignments	RRA-06	Mansell Road Extension	Alpharetta Highway (SR 9/120)	Crossville Road (SR 92)	TIER 2
Roadway Realignments	RRA-09	Riverwalk Emergency Access	Riverwalk Drive	Azalea Drive	TIER 2
Roadway Realignments	RRA-11	Sun Valley-Houze Road Connector	Houze Road (SR 140)	Existing Roadway	TIER 2
Traffic Calming Enhancements	TCE-04	Commerce Parkway	Holcomb Bridge Road (SR 140)	Old Roswell Road	TIER 2
Traffic Calming Enhancements	TCE-08	Eves Road	Riverside Road	Holcomb Bridge Road (SR 140)	TIER 2
Traffic Calming Enhancements	TCE-10	Hightower Road	Pine Grove Road	Coleman Road	TIER 2
Traffic Calming Enhancements	TCE-11	Holcomb Bridge Road (SR 140)	Holcomb Woods Parkway	City Limits	TIER 2
Traffic Calming Enhancements	TCE-12	Holcomb Woods Parkway	Old Alabama Road	Holcomb Bridge Road (SR 140)	TIER 2
Traffic Calming Enhancements	TCE-14	Jones Road	City Limits	Woodstock Road	TIER 2
Traffic Calming Enhancements	TCE-17	Marietta Highway (SR 120)	City Limits	Alpharetta Highway (SR 9)	TIER 2
Traffic Calming Enhancements	TCE-19	Norcross Street	Alpharetta Highway (SR 9/120)	Warsaw Road	TIER 2
Traffic Calming Enhancements	TCE-20	North Coleman Road	Pine Grove Road	Woodstock Road	TIER 2

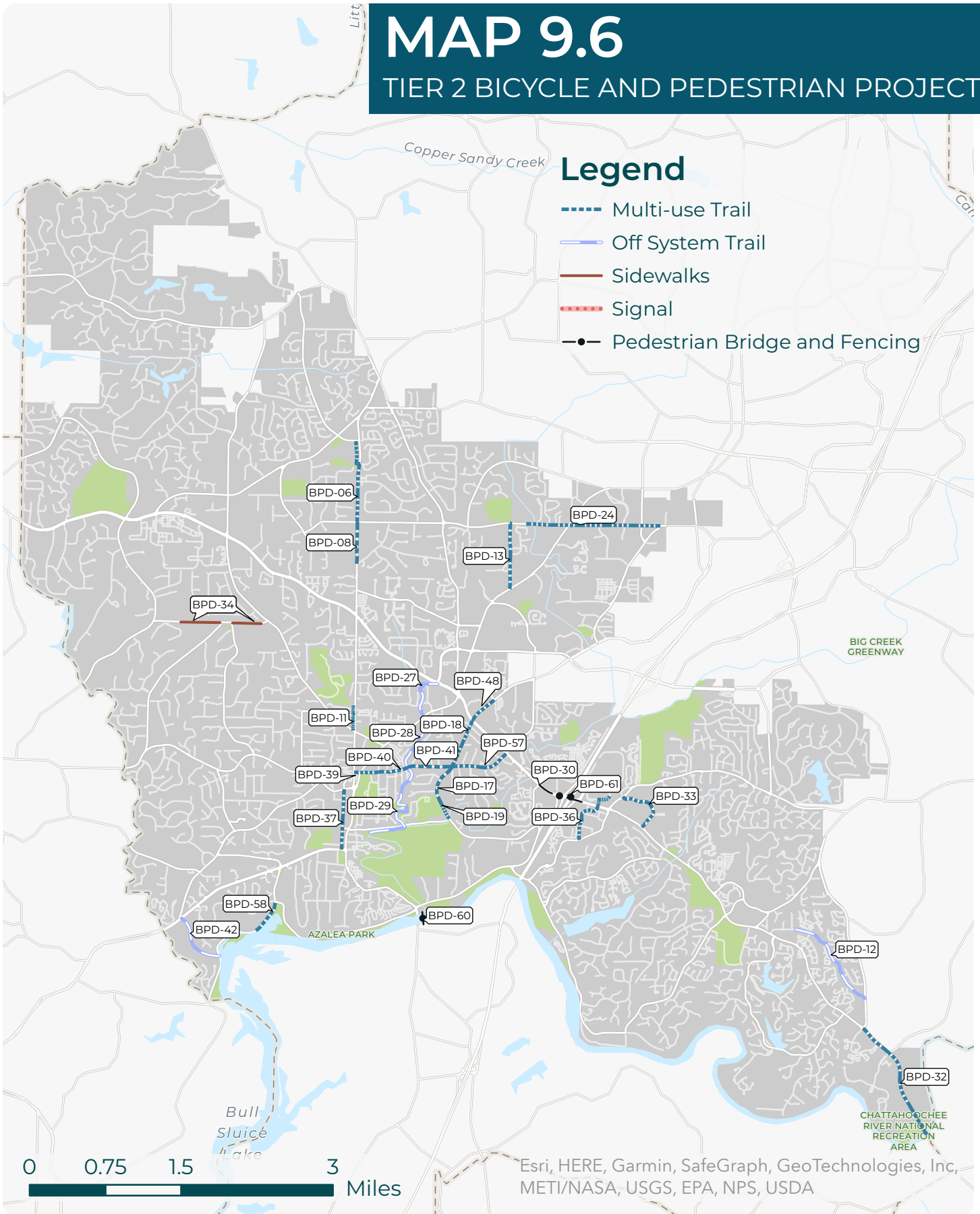
Project Category	TMP Project Identifier	Project Name	From/At	To	TIER (subject to change)
Traffic Calming Enhancements	TCE-31	Willeo Road	Coleman Road	Marietta Highway (SR 120)	TIER 2

MAP 9.6

TIER 2 BICYCLE AND PEDESTRIAN PROJECTS

Legend

- Multi-use Trail
- Off System Trail
- Sidewalks
- Signal
- Pedestrian Bridge and Fencing



Esri, HERE, Garmin, SafeGraph, GeoTechnologies, Inc, METI/NASA, USGS, EPA, NPS, USDA

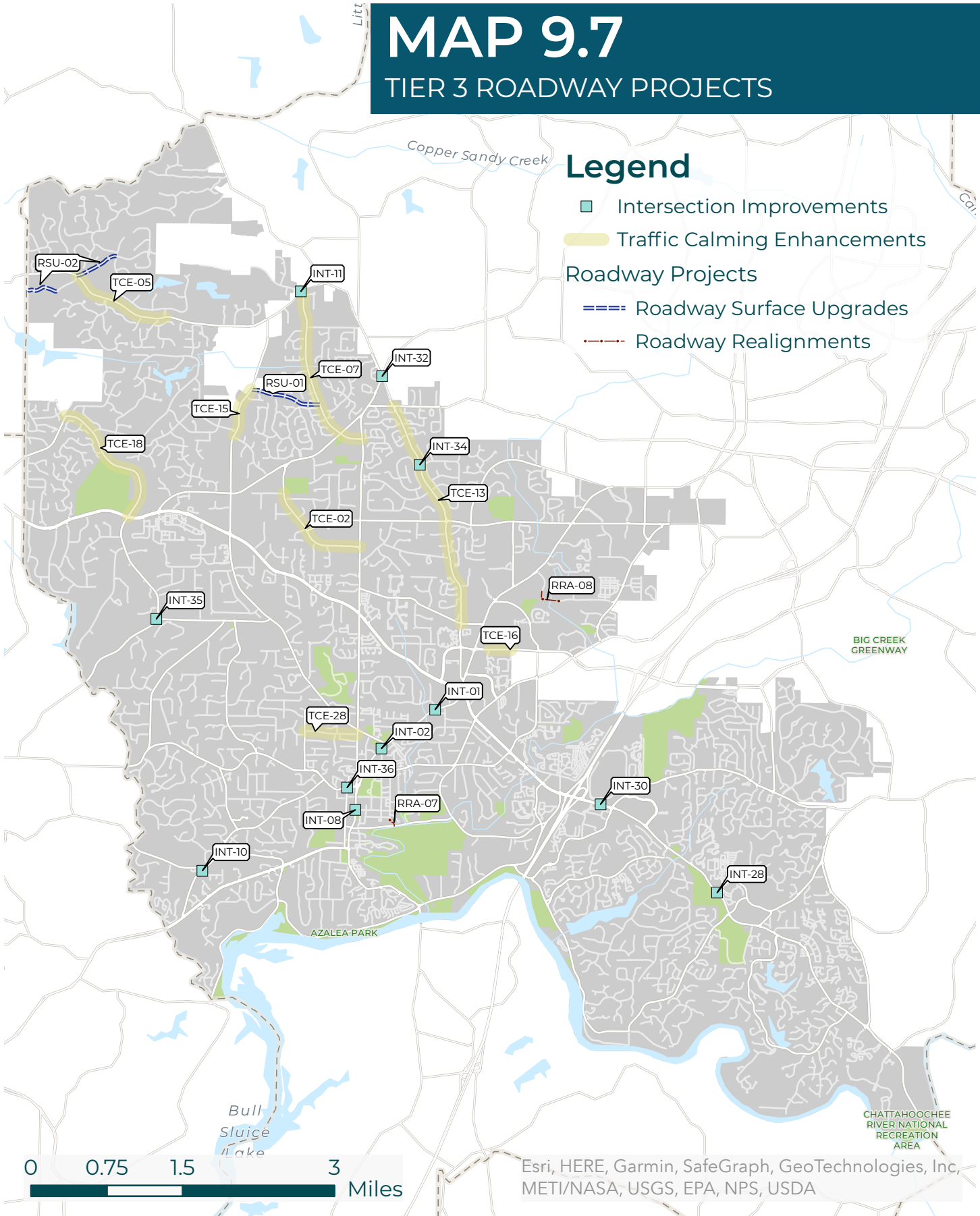
TMP Project Identifier	Project Name	From/At	To	TIER (subject to change)	Project Type
BPD-08	Crabapple Road	Hembree Road	Strickland Road	TIER 2	Multi-use Trail
BPD-11	Crabapple Road/Canton Street	Planned Off-System Trail	Woodstock Road	TIER 2	Multi-use Trail
BPD-12	East Roswell Trail/Champions Green Parkway/Powder Ridge	Scott Road	Nesbitt Ferry Road	TIER 2	Off System Trail
BPD-13	Elkins Road	Alpharetta Highway (SR 9)		TIER 2	Multi-use Trail
BPD-17	Grimes Bridge Road	Adult Rec Center (ARC) entrance	Norcross Street	TIER 2	Multi-use Trail
BPD-18	Grimes Bridge Road	Norcross Street	Holcomb Bridge Road	TIER 2	Multi-use Trail
BPD-19	Grimes Bridge Road	Oxbo Road	Adult Rec Center (ARC) entrance	TIER 2	Multi-use Trail
BPD-24	Hembree Road	Elkins Road	Old Roswell Road	TIER 2	Multi-use Trail
BPD-27	Hog Wallow Creek	Alpharetta Highway (SR 9)	Crossville Road (SR 92)	TIER 2	Off System Trail
BPD-28	Hog Wallow Creek	Norcross Street	Alpharetta Street (SR 9/120)	TIER 2	Off System Trail
BPD-29	Hog Wallow Creek	Oxbo Road	Norcross Street	TIER 2	Off System Trail
BPD-30	Holcomb Bridge Road (SR 140)	Dogwood Road	SR-400 SB on/off ramps	TIER 2	Multi-use Trail
BPD-32	Holcomb Bridge Road (SR 140)	Nesbit Ferry Road	Gwinnett County Line	TIER 2	Multi-use Trail
BPD-33	Holcomb Woods Parkway	Holcomb Bridge Road	Old Alabama Road	TIER 2	Multi-use Trail
BPD-34	Jones Road	Existing Sidewalk	Shallowford Road	TIER 2	Sidewalks
BPD-36	Market Boulevard	Old Alabama Road	Kimberly Clark Driveway	TIER 2	Multi-use Trail
BPD-37	Mimosa Blvd/ Oxbo Road	Magnolia St	SR 9	TIER 2	Multi-use Trail
BPD-39	Norcross Street	Canton Street	Fraser St/Forrest St	TIER 2	Multi-use Trail
BPD-40	Norcross Street	Fraser St/Forrest St	Norcross Street Bridge	TIER 2	Multi-use Trail
BPD-41	Norcross Street	Norcross Street Bridge	Grimes Bridge Road	TIER 2	Multi-use Trail
BPD-42	N-S Corridor	Marietta Highway (SR 120)	Willeo Road	TIER 2	Off System Trail
BPD-48	Old Roswell Road	Holcomb Bridge Road	Commerce Parkway	TIER 2	Multi-use Trail
BPD-57	Warsaw Road	Grimes Bridge Road/Norcross St round	Holcomb Bridge Road (SR 140)	TIER 2	Multi-use Trail
BPD-58	Willeo Road	Near Boardwalk Connection	Azalea Drive	TIER 2	Multi-use Trail
BPD-61	SR-400 / Holcomb Bridge Road intercha	Holcomb Bridge Road	n/a	TIER 2	Multi-use Trail
BPD-60	SR 9 over Chattahoochee River Ped Brid	Roberts Drive (in Sandy Springs)	Riverside Road/Azalea Drive	TIER 2	Pedestrian Bridge

MAP 9.7

TIER 3 ROADWAY PROJECTS

Legend

- Intersection Improvements
- Traffic Calming Enhancements
- Roadway Projects**
- == Roadway Surface Upgrades
- - - Roadway Realignments



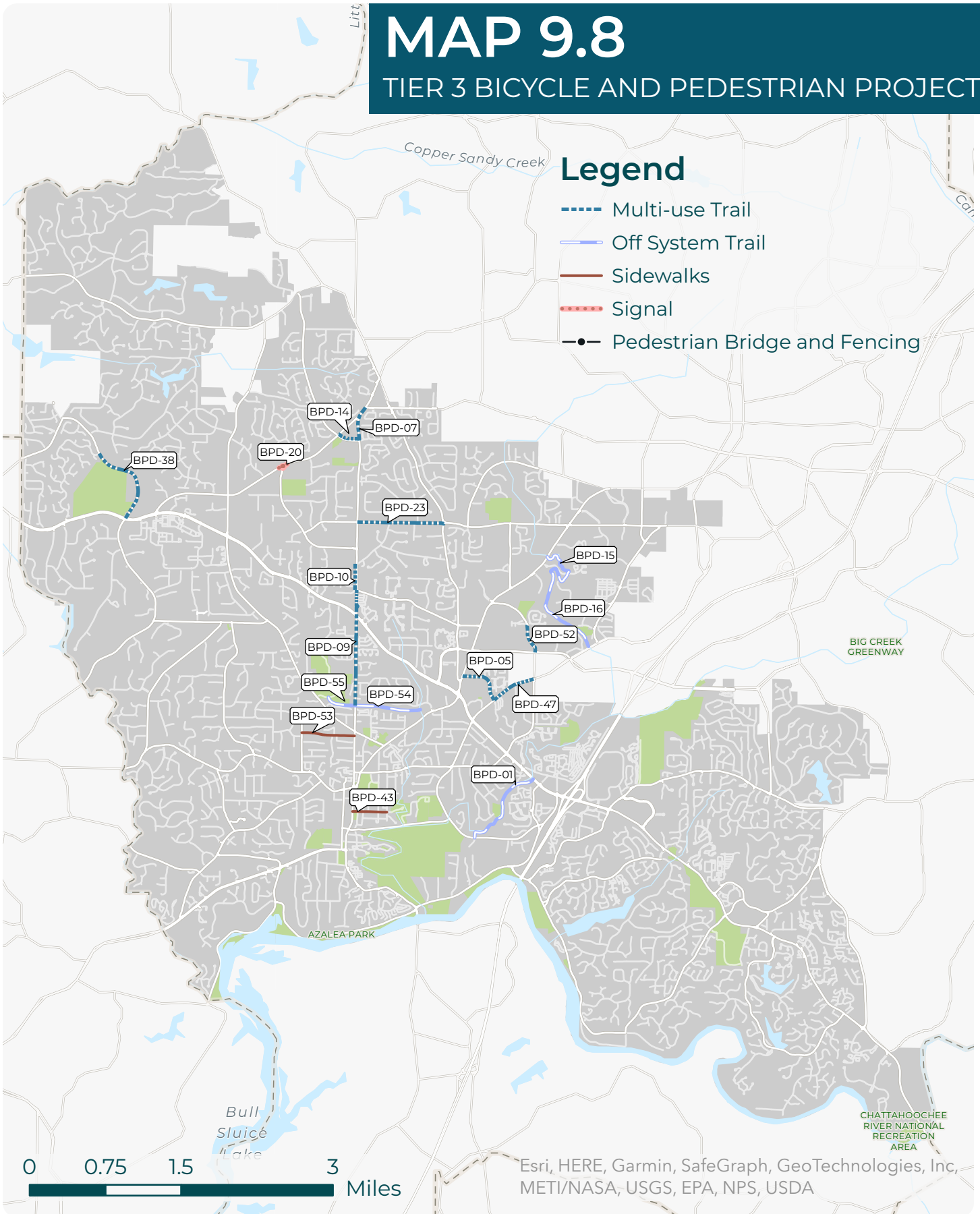
Project Category	TMP Project Identifier	Project Name	From/At	To	TIER (subject to change)
Intersection Improvements	INT-01	Alpharetta Hwy (SR 9)	Alpine Drive / Horton Drive	—	TIER 3
Intersection Improvements	INT-02	Alpharetta Hwy (SR 9)	Fraser Street	—	TIER 3
Intersection Improvements	INT-08	Atlanta Street (SR 9/120)	Oak Street	—	TIER 3
Intersection Improvements	INT-10	Coleman Road	Willeo Road (west)	—	TIER 3
Intersection Improvements	INT-12	Cox Road	Lackey Road / Lum Crowe	—	TIER 3
Intersection Improvements	INT-28	Holcomb Bridge Road (SR 140)	Scott Road	—	TIER 3
Intersection Improvements	INT-30	Holcomb Bridge Road (SR 140)	at/near Market Blvd / Market Way	—	TIER 3
Intersection Improvements	INT-34	Houze Road (SR 140)	Saddle Creek Drive	—	TIER 3
Intersection Improvements	INT-35	Jones Road	Bowen Road	—	TIER 3
Intersection Improvements	INT-36	Magnolia Street	Mimosa Boulevard	—	TIER 3
Intersection Improvements	INT-41	Norcross Street	Fraser Street/Forrest Street	—	TIER 3
Roadway Realignments	RRA-07	Myrtle Street Extension	Existing Roadway	Oxbo Road	TIER 3
Roadway Realignments	RRA-08	Old Ellis-Mansell Connector	Mansell Place	Old Ellis Road	TIER 3
Roadway Surface Upgrades	RSU-01	Kent Road	King Road	Etris Road	TIER 3
Roadway Surface Upgrades	RSU-02	Lum Crowe Road	City Limits	City Limits	TIER 3
Traffic Calming Enhancements	TCE-02	Chaffin Road	Coleman Drive	Crabapple Road	TIER 3
Traffic Calming Enhancements	TCE-05	Cox Road	Lackey Road	Litchfield Drive	TIER 3
Traffic Calming Enhancements	TCE-07	Etris Road	City Limits	Crabapple Road	TIER 3
Traffic Calming Enhancements	TCE-13	Houze Road (SR 140)	Houze Way	City Limits	TIER 3
Traffic Calming Enhancements	TCE-15	King Road	Kent Road	Chaffin Road	TIER 3
Traffic Calming Enhancements	TCE-16	Mansell Road	Holcomb Bridge Road (SR 140)	City Limits	TIER 3
Traffic Calming Enhancements	TCE-18	Mountain Park Road	Woodstock Road (SR 92)	Old Mountain Park Road	TIER 3
Traffic Calming Enhancements	TCE-28	Thompson Place	North Coleman Road	Canton Street	TIER 3

MAP 9.8

TIER 3 BICYCLE AND PEDESTRIAN PROJECTS

Legend

- Multi-use Trail
- Off System Trail
- Sidewalks
- Signal
- Pedestrian Bridge and Fencing



TMP Project Identifier	Project Name	From/At	To	TIER (subject to change)	Project Type
BPD-01	Big Creek (waterway)	Grimes Bridge Road	SR 140 / Holcomb Bridge Road	TIER 3	Off System Trail
BPD-05	Commerce Parkway	Old Roswell Road	SR 9	TIER 3	Multi-use Trail
BPD-06	Crabapple Road	Etris Road	Hembree Road	TIER 3	Multi-use Trail
BPD-07	Crabapple Road	Hardscrabble Road	Etris Road	TIER 3	Multi-use Trail
BPD-09	Crabapple Road	Houze Way	Planned Off System Trail	TIER 3	Multi-use Trail
BPD-10	Crabapple Road	Strickland Road	Houze Way	TIER 3	Multi-use Trail
BPD-14	Etris Road	Hardscrabble Road	Crabapple Road	TIER 3	Multi-use Trail
BPD-15	Foe Killer Creek	Elkins Road	Old Ellis Road extension	TIER 3	Off System Trail
BPD-16	Foe Killer Creek	Old Ellis Road extension	Old Roswell Road	TIER 3	Off System Trail
BPD-20	Hardscrabble Road	King Road	Etris Road	TIER 3	Signal
BPD-22	Hardscrabble Road/Crabapple Road	Etris Road	Rucker Road	TIER 3	Sidewalks
BPD-23	Hembree Road	Crabapple Road	Houze Road	TIER 3	Multi-use Trail
BPD-38	Mountain Park Road	SR-92/Woodstock Rd	Mountain Park Elementary	TIER 3	Multi-use Trail
BPD-43	Oak St	SR 9	Myrtle Street	TIER 3	Sidewalks
BPD-47	Old Roswell Road	Commerce Parkway	Warsaw Road	TIER 3	Multi-use Trail
BPD-52	Sun Valley Drive	Mansell Road	Finchely Drive	TIER 3	Multi-use Trail
BPD-53	Thompson Place	North Coleman Road	Canton Street	TIER 3	Sidewalks
BPD-54	Un-named E-W Creek	Crabapple Road	Hog Wallow Creek	TIER 3	Off System Trail
BPD-55	Un-named E-W Creek	Roswell Area Park	Crabapple Road	TIER 3	Off System Trail