

IDENTIFY A TREE USING A DICHOTOMOUS KEY

A DICHOTOMOUS KEY IS A SERIES OF QUESTIONS THAT WILL HELP YOU IDENTIFY SOMETHING.

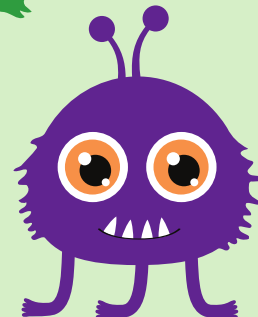
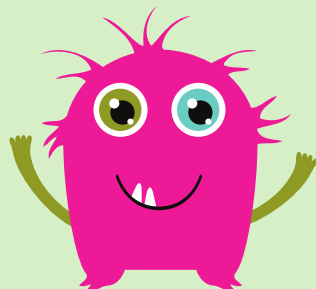
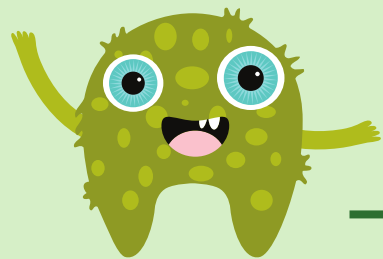
Example Dichotomous Key

USE DICHOTOMOUS KEY BELOW TO NAME THE ROSWELL MONSTERS.

- 1
A. HAS THREE LEGS MILTON FROM THE MILL
B. HAS TWO LEGS GO TO #2

- 2
A. HAS PINK FUR BIG CREEK BETTY
B. HAS GREEN FUR GO TO #3

- 3
A. HAS ONE EYE CANDICE FROM CANTON STREET
B. HAS TWO EYES CHATAHOOCHEE RIVER MONSTER



Tree Dichotomous Key

GO OUTSIDE AND SEE IF YOU CAN IDENTIFY SOME ROSWELL TREES USING THE DICHOTOMOUS KEY BELOW.

1 A. DOES THE TREE HAVE NEEDLES/SCALES AND/OR CONES GO TO CONIFEROUS TREES

B. DOES THE TREE HAVE BROAD/FLAT LEAVES GO TO DECIDUOUS TREES

Coniferous Trees

2 A. NEEDLES ARE LONG AND CLUSTERED TOGETHER



GO TO 3

B. NEEDLES ARE ARRANGED SINGLY



GO TO 5

C. LEAVES HUG THE BRANCH AND ARE SCALE-LIKE



EASTERN RED CEDAR

3 A. NEEDLES ARE IN GROUPS OF 2 AND ARE .05"-3" LONG



VIRGINIA PINE

B. NEEDLES ARE IN GROUPS OF 2 AND 3 AND ARE 3"-5" LONG



SHORTLEAF PINE

C. NEEDLES ARE IN GROUPS OF 3
AND ARE MORE THAN 5" LONG



GO TO 4

D. NEEDLES ARE IN GROUPS OF 5



EASTERN WHITE PINE

4 A. NEEDLES ARE 8"-18" LONG



LONGLEAF PINE

B. NEEDLES ARE 6"-9" LONG



LOBLOLLY PINE

5 A. NEEDLES HAVE 2 WHITE STRIPES
ON THEIR UNDERSIDE



GO TO 6

B. NEEDLES ARE GREEN ON BOTH
SIDES AND THE CONE IS A SMALL
WRINKLED BALL



BALD CYPRESS

6 A. CONES ARE LESS THAN 1" LONG



EASTERN HEMLOCK

B. CONES ARE 3"-4" LONG



DOUGLAS FIR

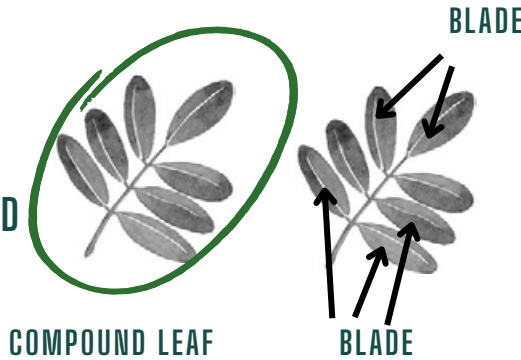
Deciduous Trees

2 A. LEAVES ARE SIMPLE (ONE LEAF ATTACHED TO A STALK)



GO TO 3

B. LEAVES ARE COMPOUND (MULTIPLE BLADES ATTACHED TO A STALK)



GO TO 17

C. LEAVES ARE FAN SHAPED



GINKGO

3 A. LEAVES ARE OPPOSITE (DIRECTLY ACROSS FROM EACH OTHER ON THE TWIG)



GO TO 4

B. LEAVES ARE ALTERNATE (STAGGERED ALONG THE TWIG)



GO TO 5

4 A. EDGE OF LEAF IS SMOOTH AND TREE BARK RESEMBLES ALLIGATOR SKIN



FLOWERING
DOGWOOD

B. SMALL OVAL LEAVES ARE 0.8"-1.6" LONG AND TREE IS EVERGREEN



CHINESE PRIVET

C. LEAVES ARE HEART SHAPED WITH A SMOOTH OUTER EDGE



SOUTHERN CATALPA

D. LEAVES HAVE 3-5 POINTED LOBES



MAPLE



RED MAPLE



SILVER MAPLE



SUGAR MAPLE

5

A. LEAVES HAVE 2-4 LOBES AND RESEMBLE A CAT'S FACE



TULIP POPLAR

B. LEAVES HAVE 3 LOBES AND RESEMBLE A MITTEN



SASSAFRAS

C. LEAVES ARE NOT LOBED



GO TO 6

D. LEAVES ARE NOT AS ABOVE



GO TO 14

6 A. LEAF EDGE IS SMOOTH GO TO 7

B. LEAF EDGE IS NOT SMOOTH GO TO 10

7 A. LEAVES ARE HEART SHAPED



EASTERN REDBUD

B. FRUIT IS A LARGE GREEN BALL



OSAGE ORANGE

C. LEAVES AND FRUIT ARE NOT AS ABOVE GO TO 8

8 A. OBLONG LEAVES ARE LEATHERY AND ARE 1.5"-4" LONG AND TREE HAS ACORNS



LIVE OAK

B. NARROW LEAVES ARE 2"-4.5" LONG AND TREE HAS ACORNS



WILLOW OAK

C. LEAVES ARE 5"-6" IN LENGTH AND TREE HAS PURPLEISH BERRIES IN THE FALL



BLACKGUM

D. LEAVES ARE LARGER THAN 6" GO TO 9

9 A. LEATHERY LEAVES ARE 6"-8" LONG WITH RUSTY RED HAIRS ON THE UNDERSIDE



SOUTHERN MAGNOLIA

B. LEAVES ARE 12"-36" LONG AND 7"-12" WIDE



BIGLEAF MAGNOLIA

10 A. VERY SHAGGY BARK PEELING OFF IN PAPERY PEICES



RIVER BIRCH

B. BARK IS SCALY OR NOTCHED AND FRUIT IS A DARK CHERRY



BLACK CHERRY

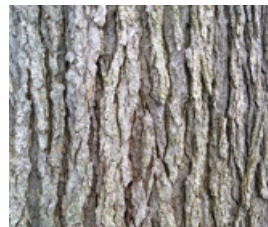


B. BARK IS MOSTLY SMOOTH



GO TO 11

C. BARK HAS RIDGES AND CRACKS



GO TO 12

11 A. LEAVES ARE LEATHERY WITH SPIKES AROUND THE EDGE



AMERICAN HOLLY

B. BARK RESEMBLES AN ELEPHANT'S LEG, LEAVES ARE SHINY GREEN IN SPING/SUMMER AND YELLOWISH LEAVES REMAIN ON TREE IN THE FALL/WINTER



AMERICAN BEECH

C. LEAVES ARE BLUEISH GREEN AND TRUNK OF TREE HAS RAISED AREAS LIK A MUSCLE



AMERICAN HORNBEAM

D. LEAF BASE RESEMBLES A HEART AND FRUIT IS CLUSTERS OF PURPLE BERRIES



DOWNY SERVICEBERRY

12 A. BASE OF LEAF IS EVEN AND FRUIT IS A SPIKEY BALL



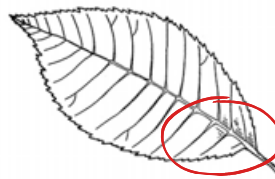
CHESTNUT

B. LEAVES ARE LONG AND NARROW



BLACK WILLOW

C. LEAF BASE IS UNEVEN ON EITHER SIDE OF THE STEM



GO TO 13

13 A. MOST TWIGS AND BRANCHES HAVE CORKY WINGS ON EITHER SIDE



WINGED ELM

B. NO WINGS PRESENT



AMERICAN ELM



14 A. LEAVES ARE LOBED LIKE FINGERS ON THE PALM OF A HAND, SPREAD OUTWARD GO TO 15

B. LEAVES ARE NOT AS ABOVE GO TO 16

15 A. LEAVES ARE STAR SHAPED WITH 5 LOBES AND FRUIT IS A SMALL SPIKEY BALL



SWEET GUM

B. LEAVES HAVE 3-5 TOOTHED LOBES AND BARK IS MULTICOLORED AND PEELING OFF IN LARGE SECTIONS



AMERICAN SYCAMORE

16 A. LOBES ARE POINTED

OAK (SEE BELOW)



PIN OAK



SCARLET OAK



NORTHERN RED OAK



SOUTHERN RED OAK

B. LOBES ARE ROUNDED

OAK (SEE BELOW)



WHITE OAK



ENGLISH OAK



OVERCUP OAK



POST OAK



WATER OAK

17 A. COMPOUND LEAVES ARE DIRECTLY ACROSS FROM EACH OTHER ON THE BRANCH



GO TO 18

B. COMPOUND LEAVES ARE STAGGERED ALONG THE BRANCH



GO TO 20

18 A. BLADES ARE ARRANGED LIKE FINGERS ON A HAND



© 2008 Arbor Day Foundation

BUCKEYE

B. BLADES ARE ARRANGED LIKE VANES OF A FEATHER



GO TO 19

19 A. 3-5 BLADES AND TWIGS ARE GREEN TO PURPLEISH-GREEN



© 2008 Arbor Day Foundation

BOXELDER

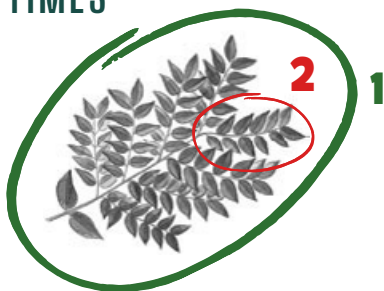
B. 5-13 BLADES WITH TOOTHED EDGES



© 2008 Arbor Day Foundation

GREEN ASH

20 A. LEAVES ARE COMPOUNDED MULTIPLE TIMES



© 2008 Arbor Day Foundation

MIMOSA

B. LEAVES ARE COMPOUNDED ONCE



GO TO 21

21 A. BLADES ARE ROUNDED AND ARE LESS THAN 2" WITH SPINES ON TWIGS



BLACK LOCUST

B. NOT AS ABOVE GO TO 22

22 A. CENTER OF TWIG IS DIVIDED INTO CHAMBERS



BLACK WALNUT

B. CENTER OF TWIG IS SOLID GO TO 23



23 A. LEAF HAS 9-17 BLADES



PECAN

B. LEAF HAS 5 BLADES GO TO 24

C. LEAF HAS 7-9 BLADES GO TO 25

24 A. SHAGGY BARK THAT PEELS OFF IN VERTICAL STRIPS



SHAGBARK HICKORY

B. NO SHAGGY BARK



PIGNUT HICKORY

25 A. NUT IS 1.5"-3" LONG WITH A THICK SHELL



MOCKERNUT HICKORY

B. NUT IS 0.75"- 1.25" WITH A THIN SHELL



BITTERNUT HICKORY